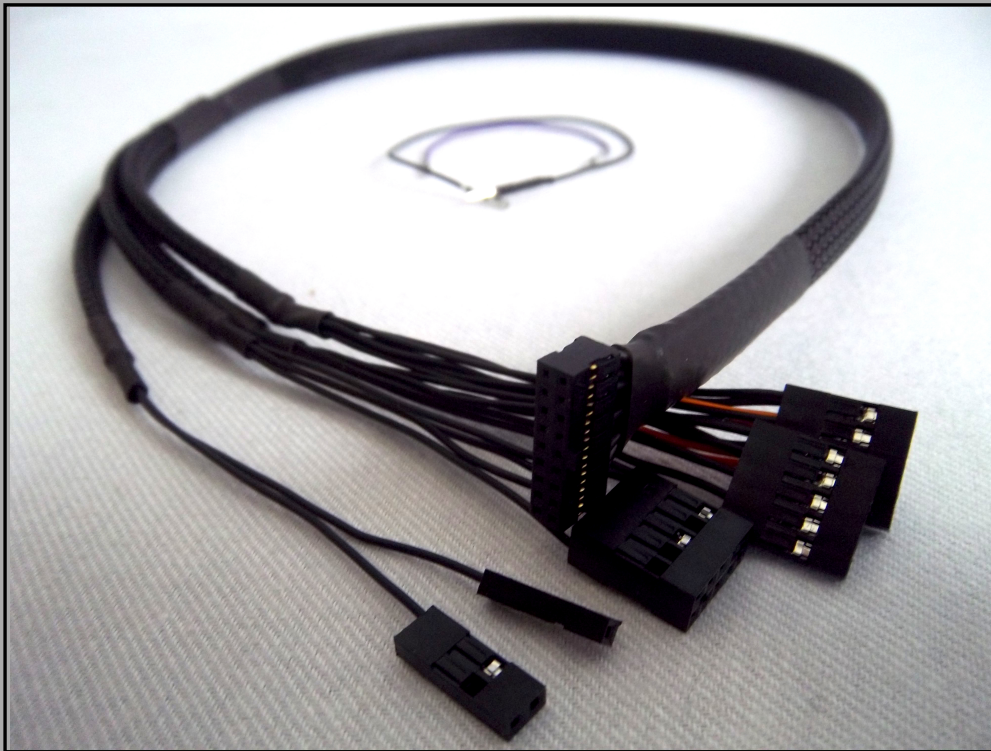


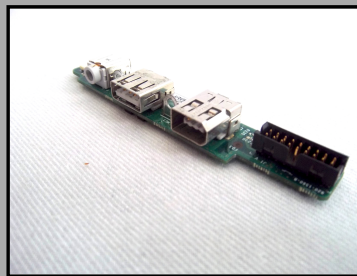
# G5 FRONT PANEL TO ATX ADAPTER

## Specs

- 1x 18 pin milli grid female connector (G5 front panel board connector)
- 1x 10 pin ATX female internal Firewire connector
- 1x 10 pin ATX female internal HD Audio connector
- 1x 4 pin + 1 ATX female internal USB connector
- 1x Power Button female connector
- 1x Power LED female connector
- The package include 1 Audio Sense Jumper and 1 Firewire Ground Jumper
- Length: 70cm aprox (45 cm + 25 cm breakout)

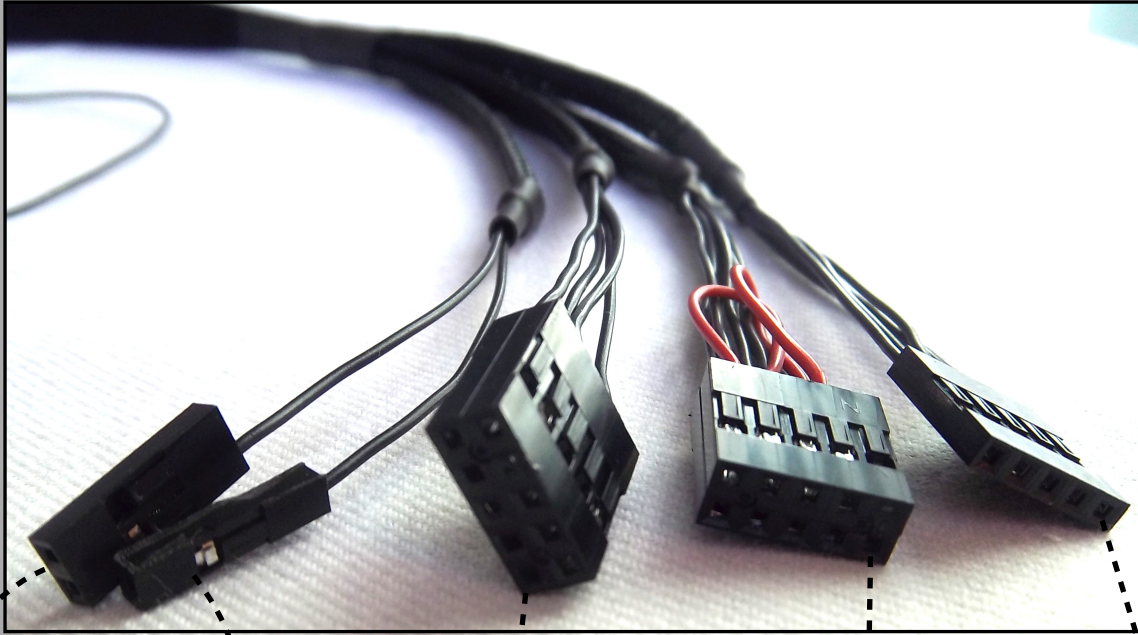


The cable is compatible with all G5 front panel boards prior to the LATE 2005 G5. This particular model has a different front panel board. Compatible front panel boards are Apple part 922-5979, 630-4805 and 820-1560.



Apple 922-5979. PowerMac G5 Front Panel Board

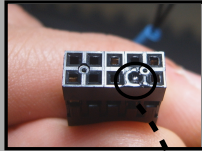
# Connection Diagram



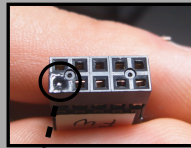
Led+ (one pin plug).  
PWR LED, MSG, PWR.

Power+ (two pins plug).  
PWR SW, PW, SPWR.

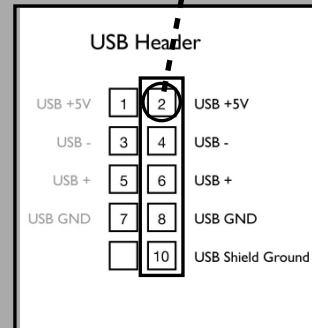
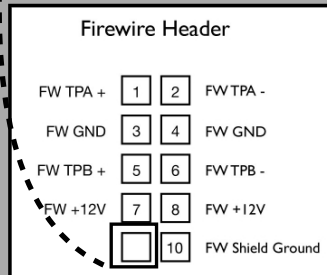
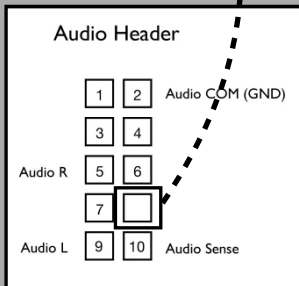
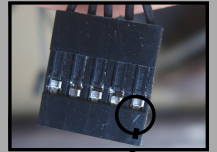
Audio (10 pin head)  
HDA



FW (10 pin plug)  
IEEE 1394



USB (5 pin plug)



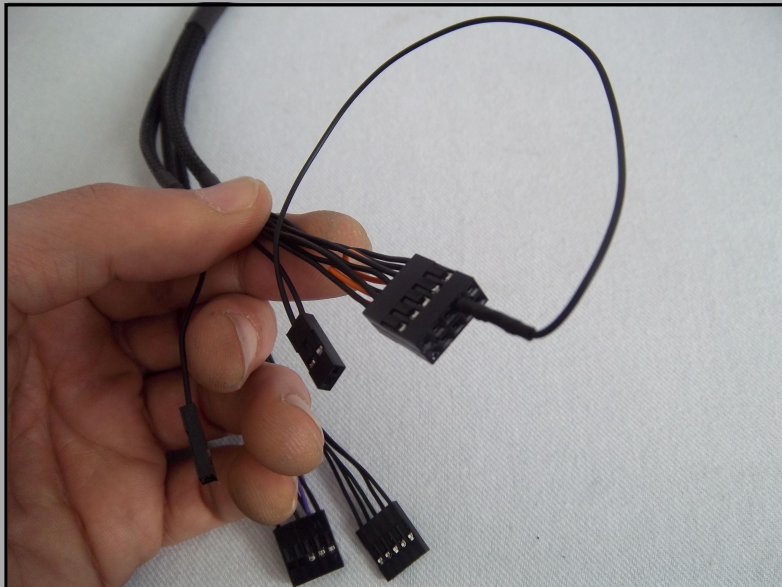
When connecting the cable to your motherboard, pay special attention to the diagram above. Is very important you locate the right connectors for the power button and led (labels may change from motherboard to motherboard). Is also necessary you connect the firewire plug too (or use the provided jumper if your system doesnt have it). Pay special attention to the polarity of the plugs! Firewire and audio headers have a "key hole" (blocked hole) so they can be connected in one way only. Be specially careful connecting the USB header: make sure the pin with the embedded triangle on the plastic connector goes to +5v (otherwise you can burn any device you connect to the port)

## Jumpers

### Firewire GND Jumper (Black Wire)

If your system does not have a firewire header to plug the connector you will need to use the included jumper. It must run from the free space in the power button plug to the pin 3/4 on the firewire plug as shown in the picture below.

Remember, **if your motherboard does not have firewire (AKA IEEE 1394) you need this jumper in place**, otherwise the cable wont work.



### Audio Sense Jumper (Purple or Blue Wire)

This conversion cable will ensure your audio gets routed from the internal port to the front panel, but if the driver you are using doesnt enable the internal HDA port then there will be no audio signal to route. Make sure your HDA kext (or whatever driver you are using) enables the internal HDA header. Due the G5 front panel design the HDA audio sense function wont work. Some GIGABYTE Z68 and Z77 motherboards will need an audio sense jumper to force the audio signal to be routed through the front panel. This jumper should connect pin 7 and 10 on the audio header like shown in the picture below

