

Lenovo BIOS Setup Utility

Devices

Serial Port Setup

Help Me

Serial Port1 Address [3F8/IRQ4]

Select settings for Port 1. If set to the Serial Port will be seen by the OS.

F1 Help ↑↓ Select Item +/- Change Values F9 Setup Default
 ESC Exit ↔ Select Menu Enter Select Sub-Menu F10 Save and Exit

Lenovo BIOS Setup Utility

Main Devices Advanced Power Security Startup Exit

- ▶ System Summary
- ▶ System Time & Date

Machine Type and Model	10T700BGGE
System Brand ID	ThinkCentre M720q
System Serial Number	[REDACTED]
Asset Tag	[REDACTED]
System UUID	[REDACTED]
Ethernet MAC Address	[REDACTED]
Embedded Controller Version	M1UCT18A
BIOS Revision Level	M1UKT5FA
Boot Block Revision Level	1.5F
BIOS Date (MM/DD/YYYY)	12/02/2020
Preinstalled OS License	NOK
OA3 License Key ID	NO DPK
OA2.1 Marker	N
Language	[English]

F1 Help ↑↓ Select Item +/- Change Values F9 Setup Default
 ESC Exit ↔ Select Menu Enter Select Sub-Menu F10 Save and Exit

Lenovo BIOS Setup Utility

Devices

ATA Drive Setup

Help

SATA Controller [Enabled]
 SATA Drive 1 [Enabled]
 Configure SATA as [AHCI]
 Hard Disk Pre-delay [Disabled]

Select whether to
 disable SATA con

F1 Help ↑↓ Select Item +/- Change Values F9 Setup Def
 ESC Exit ↔ Select Menu Enter Select Sub-Menu F10 Save and

Lenovo BIOS Setup Utility

Devices

USB Setup

Help

USB Support [Enabled]
 USB Legacy Support [Enabled]
 USB Enumeration Delay [Disabled]
 Front USB Ports [Enabled]
 USB Port 1 [Enabled]
 USB Port 2 [Enabled]
 Rear USB Ports [Enabled]
 USB Port 3 [Enabled]
 USB Port 4 [Enabled]
 USB Port 5 [Enabled]
 USB Port 6 [Enabled]

Select whether to
 disable USB (Uni
 Bus) functions.
 If the functions
 no USB device ca

F1 Help ↑↓ Select Item +/- Change Values F9 Setup Def
 ESC Exit ↔ Select Menu Enter Select Sub-Menu F10 Save and

Lenovo BIOS Setup Utility

Devices

Audio Setup

Help

Onboard Audio Controller
Internal Speaker

[Enabled]
[Enabled]

Select whether to
disable Onboard
Controller.

F1 Help ↑↓ Select Item +/- Change Values F9 Setup Def
ESC Exit ↔ Select Menu Enter Select Sub-Menu F10 Save and

Lenovo BIOS Setup Utility

Devices

Video Setup

Help

Select Active Video

[Auto]

Select primary v
that will be use
output. If "Auto
system will prio
devices as follo
PEG (PCI-e Graph
IGD (Internal Gr
Note: If CPU doe
integrated graph
will be no "IGD"

F1 Help ↑↓ Select Item +/- Change Values F9 Setup Def
ESC Exit ↔ Select Menu Enter Select Sub-Menu F10 Save and

Lenovo BIOS Setup Utility

Devices

PCI Express Configuration

ASPM Support [Disabled]
PCIe 8x Slot Speed [Auto]

Help

[Auto] Configure automatically according to what the attached device supports in each port.
[Disabled] Disable support of all PCIe ports.

F1 Help ↑↓ Select Item +/- Change Values F9 Setup Defaults
ESC Exit ↔ Select Menu Enter Select Sub-Menu F10 Save and Exit

Lenovo BIOS Setup Utility

Devices

Network Setup

Onboard Ethernet Controller [Enabled]
PXE Option ROM [Disabled]
PXE IPV4 Network Stack [Disabled]
PXE IPV6 Network Stack [Disabled]

Help

Select whether to enable or disable Onboard Ethernet Controller.
NOTE:
If this option is set to "Disabled", the related function will be disabled.

F1 Help ↑↓ Select Item +/- Change Values F9 Setup Defaults
ESC Exit ↔ Select Menu Enter Select Sub-Menu F10 Save and Exit

Lenovo BIOS Setup Utility

Advanced

Intel(R) Manageability

Help

ME Firmware Version 12.0.35.1427
Manageability Type None

F1 Help ↑↓ Select Item +/- Change Values F9 Setup Def
ESC Exit ↔ Select Menu Enter Select Sub-Menu F10 Save and

Lenovo BIOS Setup Utility

Advanced

CPU Setup

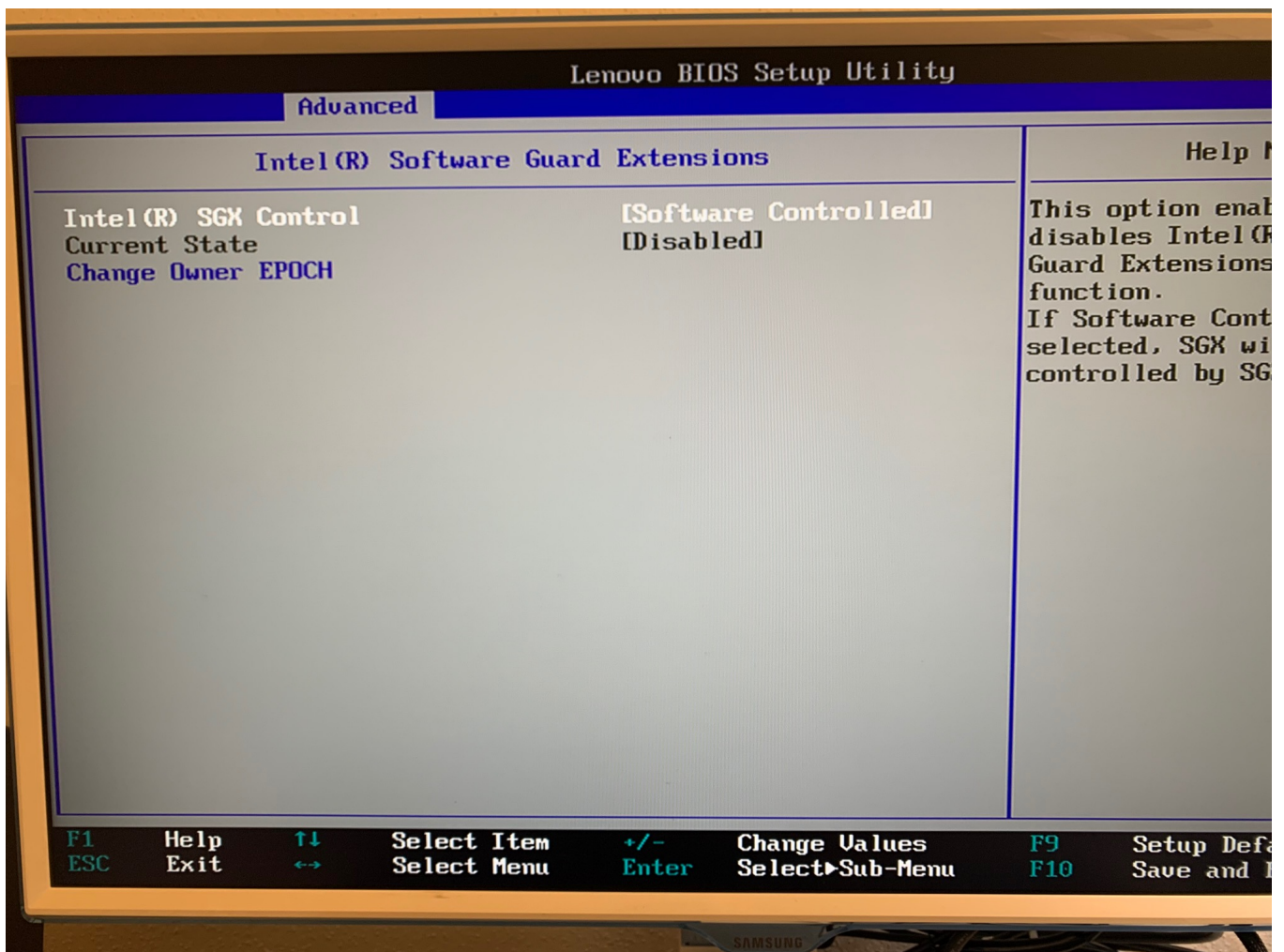
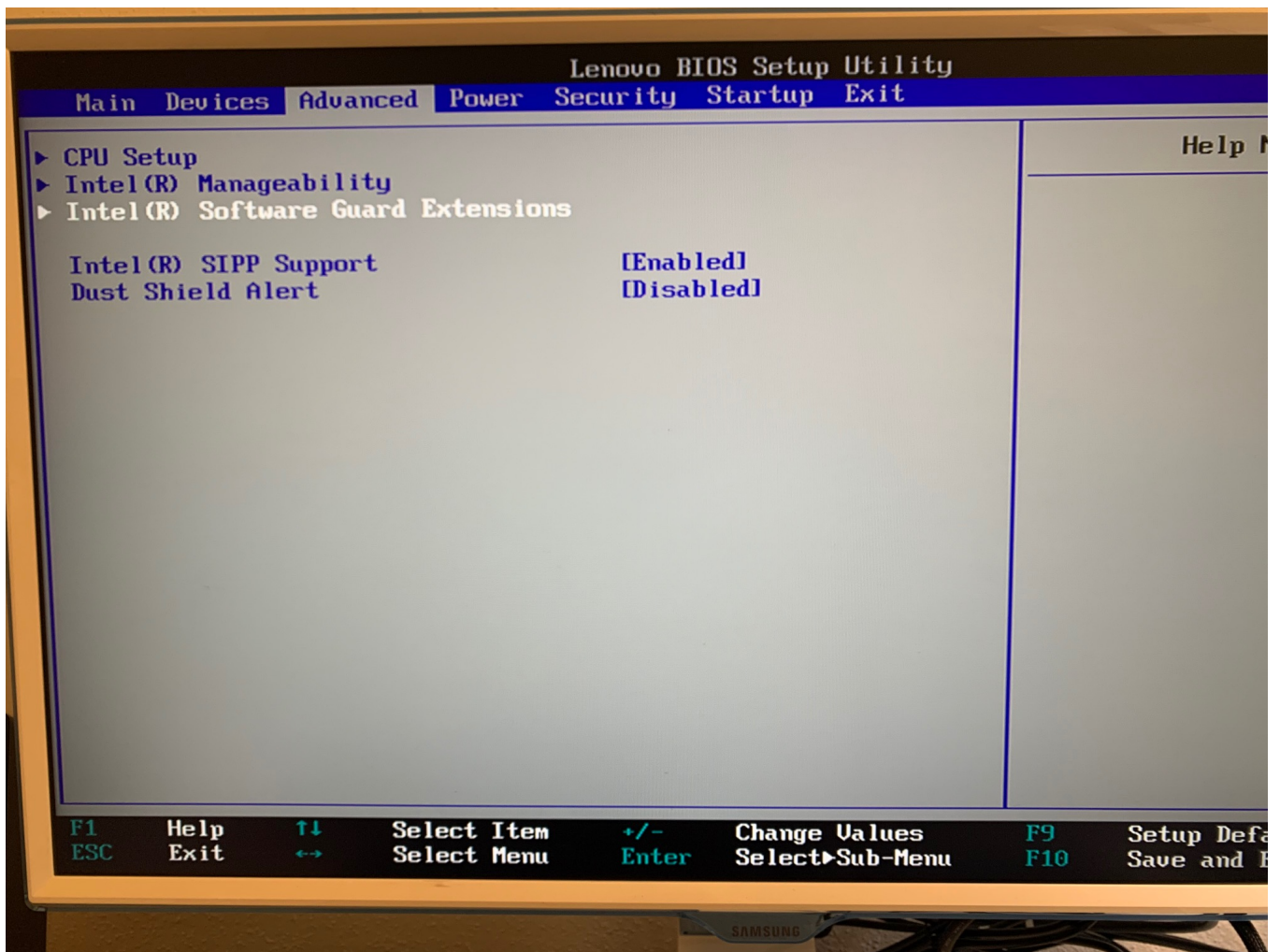
Help

EIST Support [Enabled]
Core Multi-Processing [Enabled]
Intel(R) Virtualization Technology [Enabled]
VT-d [Enabled]
C1E Support [Enabled]
C State Support [C1C3C6C7C8C10]
Turbo Mode [Enabled]

CPU ID 906EA
Microcode Revision (MM/DD/YYYY) 000000DE (05/25/2020)

EIST (Enhanced Intel SpeedStep(R) Technology) allows the system to dynamically adjust voltage and core frequency which can result in decreased average power consumption. Select whether to disable Enhanced Intel SpeedStep(R) Technology.

F1 Help ↑↓ Select Item +/- Change Values F9 Setup Def
ESC Exit ↔ Select Menu Enter Select Sub-Menu F10 Save and



Lenovo BIOS Setup Utility

Power

Intelligent Cooling Engine (ICE)

ICE Performance Mode [Better Acoustic Performance]
ICE Thermal Alert [Enabled]

Help

[Better Acoustic Performance]
The system will run at a normal noise level.
[Better Thermal Protection]
The system will run at a better thermal protection level.
[Full Speed] All system components will run at full speed.

F1 Help ↑↓ Select Item +/- Change Values F9 Setup Defaults
ESC Exit ↔ Select Menu Enter Select Sub-Menu F10 Save and Exit

Lenovo BIOS Setup Utility

Main Devices Advanced Power Security Startup Exit

After Power Loss [Last State]
Enhanced Power Saving Mode [Disabled]
Smart Power On [Disabled]

- ▶ Intelligent Cooling Engine (ICE)
- ▶ Automatic Power On

Help

This field controls the system's power state after power is removed and then restored. Select "Power On" to power the system on after power is restored. Select "Power Off" to power the system off after power is restored. Select "Last State" to return the system to its previous state.

F1 Help ↑↓ Select Item +/- Change Values F9 Setup Defaults
ESC Exit ↔ Select Menu Enter Select Sub-Menu F10 Save and Exit

