



Introduction

OpenCore Post-Install

Universal

Fixing Audio

Bootimg without USB

Updating OpenCore, kexts and macOS

Fixing DRM

Fixing iServices

Fixing Power Management

Fixing Sleep

USB Fixes

USB Mapping: Introduction

System Preparation

USB Mapping ▶

Miscellaneous Fixes ▶

Security

Security and FileVault

FileVault

Vault

ScanPolicy

OpenCore Menu Password

Apple Secure Boot

Laptop Specifics

Fixing Battery Read-outs

Installing and using BootCamp utilities

So a neat feature of OpenCore is the ability to avoid the BIOS entirely and use Startup disk solely for multiboot. Problem comes in when we try to boot windows and have no way of setting the boot option back to macOS. That's where the BootCamp utilities come in.

- Note: This guide will not cover the creation of the Windows installer, only the installation of BootCamp drivers.
 - Example of Windows installer creation: [Build a Bootable Windows ISO](#) ↗
 - Reminder: Windows **MUST** be GPT/GUID based, OpenCore will not boot legacy installs
- Note 2: Using BootCamp utilities from macOS will erase the EFI/BOOT/BOOTx64.efi file on your EFI, which is needed for booting OpenCore. And OpenCore itself does not support MBR based installs so the utility is useless to us

Preparations

To start we'll need the following:

- Windows already installed
 - MUST be UEFI/GPT based
- [Brigadier](#) ↗
 - To download the BootCamp drivers



Introduction

OpenCore Post-Install

Universal

Fixing Audio

Bootng without USB

Updating OpenCore, kexts and macOS

Fixing DRM

Fixing iServices

Fixing Power Management

Fixing Sleep

USB Fixes

USB Mapping: Introduction

System Preparation

USB Mapping ▶

Miscellaneous Fixes ▶

Security

Security and FileVault

FileVault

Vault

ScanPolicy

OpenCore Menu Password

Apple Secure Boot

Laptop Specifics

Fixing Battery Read-outs

- Setup [LauncherOption](#)

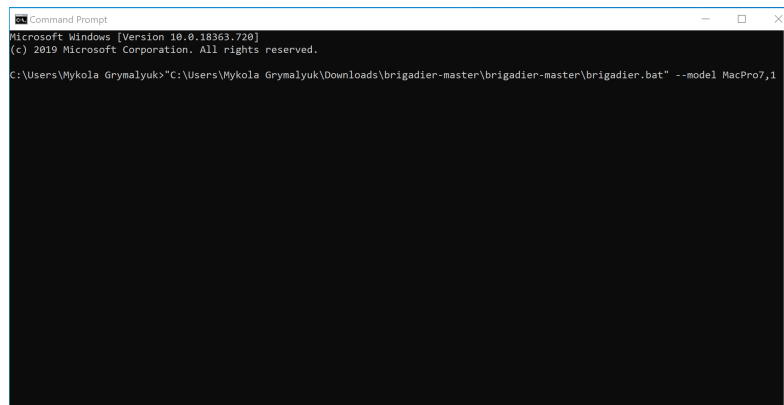
- Not required but can help alleviate headaches when Windows erases the BOOTx64.efi
- OpenCore uses

Installation

To install, it's as simple as grabbing [Brigadier](#) and running either `Brigadier.bat` for Windows or `Brigadier.command` for macOS. If the SMBIOS you're currently using either has BootCamp issues or want to download for another SMBIOS, you can add `-- model{SMBIOS}` to the end:

```
path/to/Brigadier --model MacPro7,1
```

- **Note:** Older versions of the BootCamp installer(6.0) do not support APFS, you'll need to either choose a newer SMBIOS that would have it bundled(ie. iMac 19,1) or after installation update your bootcamp software. See below for more details on troubleshooting: [Windows Startup Disk can't see APFS drives](#)





Introduction

OpenCore Post-Install

Universal

Fixing Audio

Bootng without USB

Updating OpenCore, kexts and macOS

Fixing DRM

Fixing iServices

Fixing Power Management

Fixing Sleep

USB Fixes

USB Mapping: Introduction

System Preparation

USB Mapping ▶

Miscellaneous Fixes ▶

Security

Security and FileVault

FileVault

Vault

ScanPolicy

OpenCore Menu Password

Apple Secure Boot

Laptop Specifics

Fixing Battery Read-outs

WINDOWS.

```
sh
\Users\{Username}\bootcamp-{filename}\BootCamp
```

• macOS:

```
sh
/Users/{Username}/BootCamp-{filename}/Windows'
```

macOS users will next need to expand WindowsSupport.dmg and place it somewhere Windows can get.

```
Command Prompt
7-Zip 19.00 (x64) : Copyright (c) 1999-2018 Igor Pavlov : 2019-02-21
Scanning the drive for archives:
1 file, 712191847 bytes (680 MiB)
Extracting archive: C:\Users\WYKOLA~1\AppData\Local\Temp\bootcamp-unpack_vd3fahuu\WindowsSupport.dmg
Path = C:\Users\WYKOLA~1\AppData\Local\Temp\bootcamp-unpack_vd3fahuu\WindowsSupport.dmg
Type = Dmg
Physical Size = 712191847
Method = Copy 2LIB CRC
Blocks = 1358
----
Path = 0:Apple_ISO
Size = 1423777792
Packed Size = 712107974
CRC = 2CD7A64F
Comment = BOOTCAMP (Apple_ISO : 0)
Method = Copy 2LIB CRC
--
Path = 0:Apple_ISO
Type = Iso
Physical Size = 1423777792
Created = 2020-01-29 01:32:09
Modified = 2020-01-29 01:32:09
Everything is Ok
Folders: 118
Files: 731
Size: 1422356718
Compressed: 712191847
Done.
C:\Users\WYKOLA~1\Gymalyuk>
```

Next navigate to the bootcamp-{filename}\BootCamp folder and run the Setup.exe:



Introduction

OpenCore Post-Install

Universal

Fixing Audio

Bootng without USB

Updating OpenCore, kexts and macOS

Fixing DRM

Fixing iServices

Fixing Power Management

Fixing Sleep

USB Fixes

USB Mapping: Introduction

System Preparation

USB Mapping ▸

Miscellaneous Fixes ▸

Security

Security and FileVault

FileVault

Vault

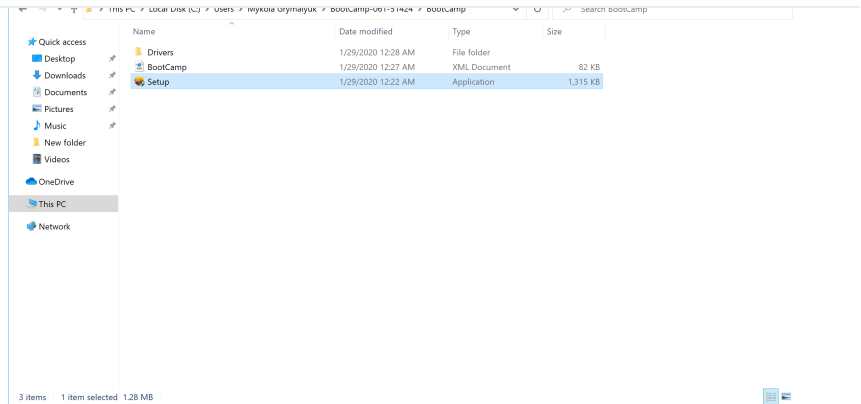
ScanPolicy

OpenCore Menu Password

Apple Secure Boot

Laptop Specifics

Fixing Battery Read-outs



Once all is finished, you now have BootCamp switching! There should be a little BootCamp icon in you tray now that you can select which drive to boot to.

- Note: For those no needing the extra drivers BootCamp provides, you can delete the following:
 - \$WinPEDriver\$: **DO NOT** delete the folder itself, just the drivers inside
 - Apple Wifi card users will want to keep the following:
 - \$WinPEDriver\$/BroadcomWireless
 - \$WinPEDriver\$/BroadcomBluetooth
 - \$WinPEDriver\$/AppleBluetoothBroadcom
 - BootCamp/Drivers/...
 - **DO NOT** delete BootCamp/Drivers/Apple
 - Apple Wifi card users will want to keep the following:
 - BootCamp/Drivers/Broadcom/BroadcomBluetooth

Troubleshooting

- [Can't find Windows/BootCamp drive in picker](#)



Introduction

OpenCore Post-Install

Universal

Fixing Audio

Bootng without USB

Updating OpenCore, kexts and macOS

Fixing DRM

Fixing iServices

Fixing Power Management

Fixing Sleep

USB Fixes

USB Mapping: Introduction

System Preparation

USB Mapping ▶

Miscellaneous Fixes ▶

Security

Security and FileVault

FileVault

Vault

ScanPolicy

OpenCore Menu Password

Apple Secure Boot

Laptop Specifics

Fixing Battery Read-outs

- [Bootng Windows results in BlueScreen or Linux crashes](#)
- [Bootng Windows error: OCB: StartImage failed – Already started](#)
- [Windows Startup Disk can't see APFS drives](#)

Can't find Windows/BootCamp drive in picker

So with OpenCore, we have to note that legacy Windows installs are not supported, only UEFI. Most installs now are UEFI based but those made by BootCamp Assistant in macOS are legacy based, so you'll have to find other means to make an installer(Google's your friend). This also means MasterBootRecord/Hybrid partitions are also broken so you'll need to format the drive you want to install onto with DiskUtility.

Now to get onto troubleshooting:

- Make sure `Misc -> Security -> ScanPolicy` is set to `0` to show all drives

If Windows and OpenCore's boot loaders are on the same drive, you'll need to add a BlessOverride entry:

```
Misc -> BlessOverride -> \EFI\Microsoft\Boot\
```

- **Note:** As of OpenCore 0.5.9, this no longer needs to be specified. OpenCore should pick up on this entry automatically



Introduction

OpenCore Post-Install

Universal

Fixing Audio

Bootng without USB

Updating OpenCore, kexts and macOS

Fixing DRM

Fixing iServices

Fixing Power Management

Fixing Sleep

USB Fixes

USB Mapping: Introduction

System Preparation

USB Mapping

Miscellaneous Fixes

Security

Security and FileVault

FileVault

Vault

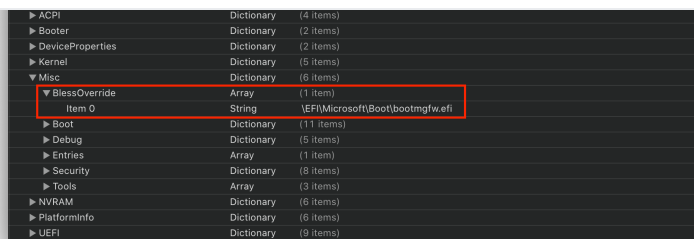
ScanPolicy

OpenCore Menu Password

Apple Secure Boot

Laptop Specifics

Fixing Battery Read-outs



"You can't change the startup disk to the selected disk" error

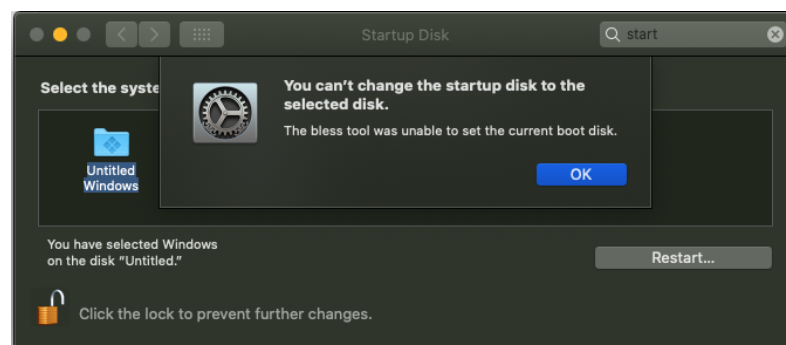
This is commonly caused by either:

- 3rd Party NTFS Drivers(ie. Paragon)
- Irregular partition setup of the Windows drive, specifically that the EFI is not the first partition.

To fix the former, either disable or uninstall these tools.

To fix the latter, we need to enable this quirk:

- PlatformInfo -> Generic -> AdviseWindows -> True



Bootng Windows results in BlueScreen or Linux crashes



Introduction

OpenCore Post-Install

Universal

Fixing Audio

Bootimg without USB

Updating OpenCore, kexts and macOS

Fixing DRM

Fixing iServices

Fixing Power Management

Fixing Sleep

USB Fixes

USB Mapping: Introduction

System Preparation

USB Mapping ▶

Miscellaneous Fixes ▶

Security

Security and FileVault

FileVault

Vault

ScanPolicy

OpenCore Menu Password

Apple Secure Boot

Laptop Specifics

Fixing Battery Read-outs

supporting MATs. Check your logs whether your firmware supports Memory Attribute Tables(generally seen on 2018 firmwares and newer)

For Z390 and newer motherboards, you'll also want to enable `ProtectUefiServices` to ensure OpenCore's patches are applying correctly.

If your firmware is quite old(generally 2013 and older), you'll want to enable `ProtectMemoryRegions` .

Due to the variations of firmwares from vendor to vendor, you'll need to play around with the combination of these 3 quirks and see which works best.

Common Windows error code:

- `0xc000000d`

Booting Windows error: OCB: StartImage failed – Already started

This is due to OpenCore getting confused when trying to boot Windows and accidentally thinking it's booting OpenCore. This can be avoided by either move Windows to it's own drive *or* adding a custom drive path under BlessOverride. See [Configuration.pdf](#)↗ and [Can't find Windows/BootCamp drive in picker](#) entry for more details.



Introduction

OpenCore Post-Install

Universal

Fixing Audio

Bootimg without USB

Updating OpenCore, kexts and macOS

Fixing DRM

Fixing iServices

Fixing Power Management

Fixing Sleep

USB Fixes

USB Mapping: Introduction

System Preparation

USB Mapping ▸

Miscellaneous Fixes ▸

Security

Security and FileVault

FileVault

Vault

ScanPolicy

OpenCore Menu Password

Apple Secure Boot

Laptop Specifics

Fixing Battery Read-outs

Windows Startup Disk can't see APFS drives

- Outdated BootCamp drivers(generally ver 6.0 will come with brigadier, BootCamp Utility in macOS provides newer version like ver 6.1). You can try to alleviate these issues by either updating to the newest release with Apple's software updater or selecting a newer SMBIOS from brigadier(ie. `--model iMac19,1`) and when running brigadier.

For the latter, you'll need to run the following(replace `filename.msi` with the BootCamp installation msi):

```
msiexec.exe /x "c:\filename.msi" sh
```

Last Updated: 1/30/2021, 9:16:42 PM

← [Setting up LauncherOption](#)

[Fixing RTC](#) →