

Erledigt

Deutsche Anleitung Ozmosis Bios erstellen/bearbeiten...etc...

Beitrag von „thomaso66“ vom 23. September 2014, 21:17

So da der ein oder andere mit helfen möchte bei der Ozmosis DB hier mal eine etwas ausführlichere Anleitung...ich vervollständige sie nach und nach...wird etwas länger 😊

So eingesetzte Programme

OSX:

maciASL
mmtool
ozmtool

Windows:

ami ChangeLogo

Eingesetzte Patch Source für maciASL

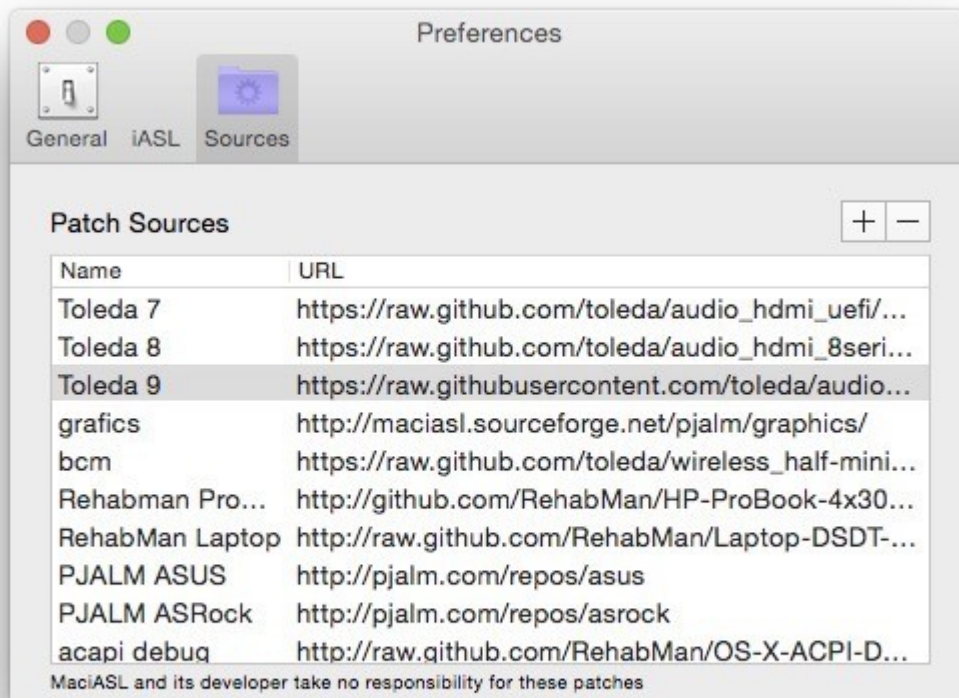
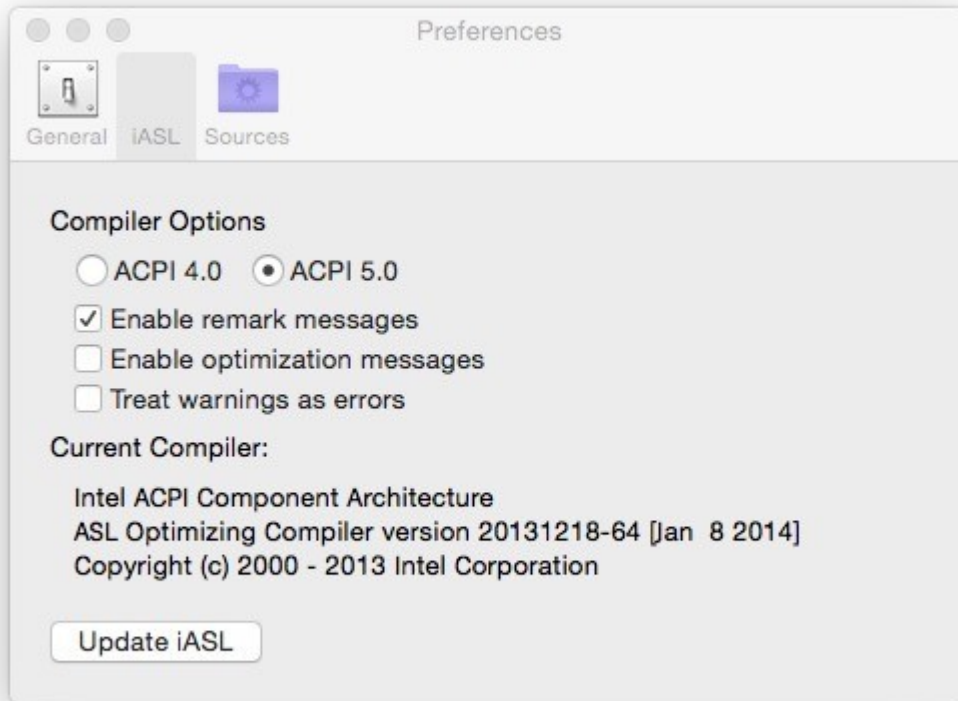
Toleda 7 https://raw.githubusercontent.com/toleda/audio_hdmi_uefi/master

Toleda 8 https://raw.githubusercontent.com/toleda/audio_hdmi_8series/master

Toleda 9 https://raw.githubusercontent.com/toleda/audio_hdmi_9series/master/

Vorbereitungen in maciASL

Preferences siehe Bilder



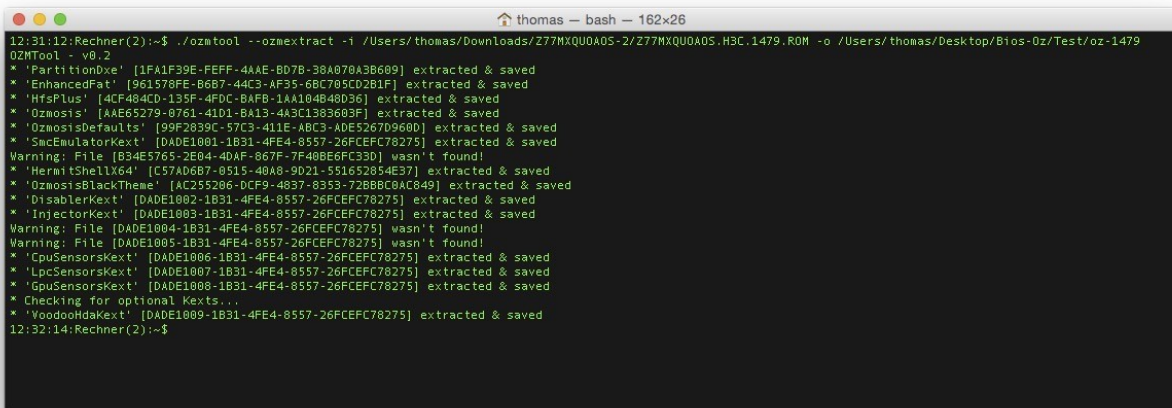
So das war es erstmal an Vorbereitungen.

Ich gehe erstmal auf den allgemeinen Fall ein und komme dann später zu den Besonderheiten, sollte es so nicht gehen.

So als erstes nehmen wir uns das Original Ozmosis Bios und Extrahieren uns daraus alle benötigten Files mit ozmtool in ein Verzeichnis ich benenne es immer mit der jeweiligen Nummer um nicht durch einander zu kommen.

Code

1. `./ozmtool --ozmextract -i Original-BIOS.rom -o Ausgabe-Verzeichnis`



```
12:31:12:Rechner(2):~$ ./ozmtool --ozmextract -i /Users/thomas/Downloads/Z77MXQU0A05-2/Z77MXQU0A05.H3C.1479.ROM -o /Users/thomas/Desktop/Bios-Oz/Test/oz-1479
OZMTool - v8.2
* 'PartitionDxe' [1FA1F99E-FEFF-4AAE-B07B-38A070A3B609] extracted & saved
* 'EnhancedFat' [961578FE-B6B7-44C3-AF35-6BC705CD2B1F] extracted & saved
* 'HfsPlus' [4CF484CD-135F-4FDC-BAFB-1AA104B48036] extracted & saved
* 'Ozmosis' [AAE65279-0761-41D1-BA13-4A3C1383603F] extracted & saved
* 'OzmosisDefaults' [99F2839C-57C3-411E-ABC3-ADE5267D9600] extracted & saved
* 'SmcEmulatorKext' [DADE1001-1B31-4FE4-8557-26FCEFC78275] extracted & saved
Warning: File [B34E5765-2E04-4DAF-967F-7F48B6FC35D] wasn't found!
* 'HermitShellI64' [C37A06B7-8515-40A8-9021-531852854E37] extracted & saved
* 'OzmosisBlackTheme' [AC255286-DCF9-4637-8353-72B8BC8AC849] extracted & saved
* 'DisablerKext' [DADE1002-1B31-4FE4-8557-26FCEFC78275] extracted & saved
* 'InjectorKext' [DADE1003-1B31-4FE4-8557-26FCEFC78275] extracted & saved
Warning: File [DADE1004-1B31-4FE4-8557-26FCEFC78275] wasn't found!
Warning: File [DADE1005-1B31-4FE4-8557-26FCEFC78275] wasn't found!
* 'CpuSensorsKext' [DADE1006-1B31-4FE4-8557-26FCEFC78275] extracted & saved
* 'LpcSensorsKext' [DADE1007-1B31-4FE4-8557-26FCEFC78275] extracted & saved
* 'GpuSensorsKext' [DADE1008-1B31-4FE4-8557-26FCEFC78275] extracted & saved
* Checking for optional Kexts...
* 'VoodooHdaKext' [DADE1009-1B31-4FE4-8557-26FCEFC78275] extracted & saved
12:32:14:Rechner(2):~$
```

(da das Tool noch nicht angepasst ist können wir die Warnungen an der stelle Ignorieren)
Wir haben nun alles was wir an Ozmosis benötigen im angegeben Verzeichnis.

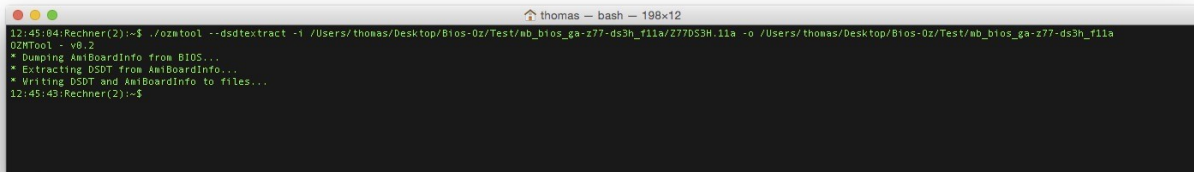
Die VoodooHDA.ffi können wir löschen (ich habe sie drin gelassen, weil sie läst sich ja via Config.plist einfach ausschalten.)

So nun zum "Normalen" Bios

Als erstes Extrahier ich mir immer die DSDT um den jeweiligen Patch für HDMI anzuwenden (kümmert sich nebenbei auch gleich um die interne GK)

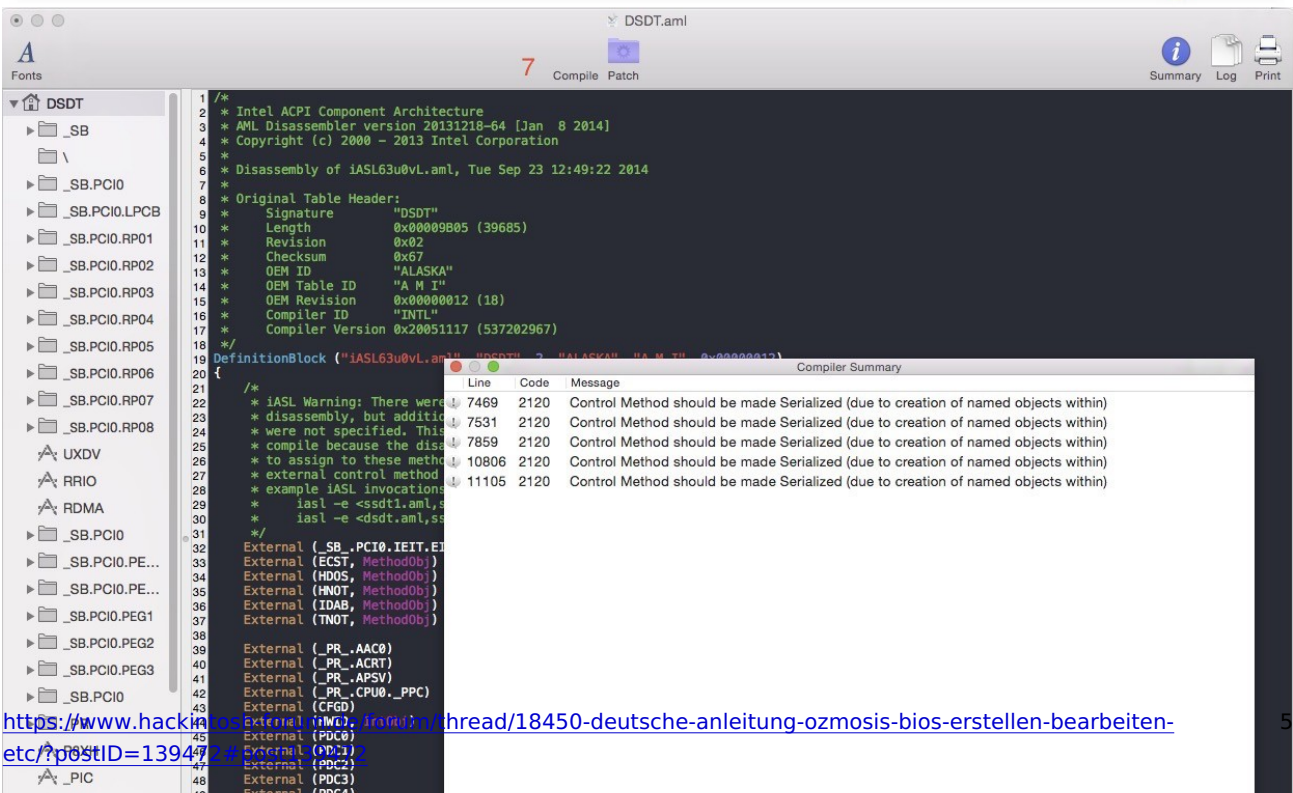
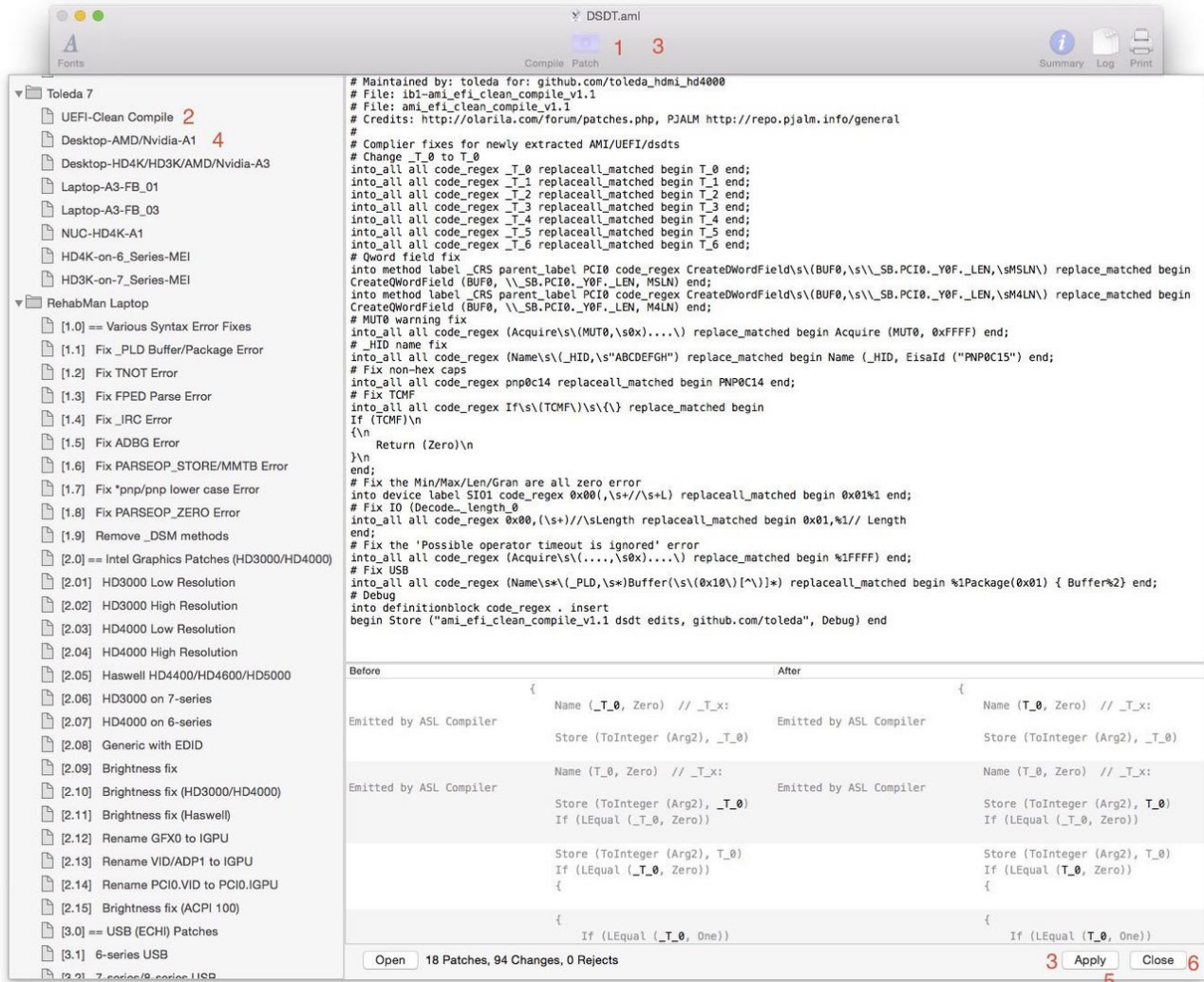
Code

1. `./ozmtool --dsdtextextract -i Bios-File -o Ausgabe-Verzeichnis`



```
thomas ~ - bash - 198x12
12:45:04:Rechner(2):-$ ./ozmtool --dsdtextextract -i /Users/thomas/Desktop/Bios-0z/Test/ab_bios_ga-z77-ds3h_11a/277053H_11a -o /Users/thomas/Desktop/Bios-0z/Test/ab_bios_ga-z77-ds3h_11a
OZMTool - v8.2
* Dumping AmIBoardInfo from BIOS...
* Extracting DSDT from AmIBoardInfo...
* Writing DSDT and AmIBoardInfo to files...
12:45:43:Rechner(2):-$
```

Die DSDT.aml mit maciASL öffnen und den passenden Patch für die Serie anwenden 7 für 77er Board etc...



<https://www.hackintosh.de/forum/thread/18450-deutsche-anleitung-ozmosis-bios-erstellen-bearbeiten-etc/?postID=139477>

Wie auf dem Bild zu sehen Schritt 1 bis 7 abarbeiten, dann ist die DSDT gepatscht und fehlerfrei 😁 diese kann dann gespeichert werden.

Nun setzen wir das Ozmosis und die DSDT wieder in das Bios ein.

Code

1. `./ozmtool --ozmcreate -f Ozmosis-Verzeichnis -d DSDT.aml -i Orgianl-Bios -o Ausgabe Bios`

```
thomas - bash - 172x105
13:08:08 Rechner(2):~$ ./ozatool -ozacreate -f /Users/thomas/Desktop/Bios-0z/Test/oz-1479 -d /Users/thomas/Desktop/Bios-0z/Test/mb_bios_ga-z77-ds3h_f11a/DS0T.aal -i /Users/thomas/Desktop/Bios-0z/Test/mb_bios_ga-z77-ds3h_f11a/Z77DS3H-11a-0ZM-DS0T-G-1479.rom
OZMTool - v0.2
Warning: No KEY-dir given! Injecting only Ozmosis files!
Info: Aggressivity level set to 'Do nothing - Inject as-is'...
Inserting supplied DS0T into image...
* Dumped AmiBoardInfo from BIOS...
* Injecting DS0T into AmiBoardInfo...
* Patching header...
  SizeOfInitializedData: A2AB --> A4E0
  SizeOfImage: AB20 --> AD40
* Patching directory entries...
- DataDirectory 85:
  VirtualAddress: AB00 --> AD20
* Patching sections...
- Section: .text
  Nothing to do here...
- Section: .idata.1
  Nothing to do here...
- Section: .data
  PhysicalAddress: A19E --> A3BE
  SizeOfRawData: A1A0 --> A3C0
- Section: .empty
  VirtualAddress: AAED --> AD00
  PointerToRawData: AAED --> AD00
- Section: .reloc
  VirtualAddress: AB00 --> AD20
  PointerToRawData: AB00 --> AD20
* Patching actual relocations...
- Relocation Table 0:
  Nothing to do here - VirtualAddress < DS0TOffset (0 < 900)
- Relocation Table 1:
- VirtualAddress: AB00 --> AD00
- Relocation: 0
  Offset: 9B8 --> B08
- Relocation: 1
  Offset: A20 --> C40
- Relocation: 2
  Offset: A20 --> C40
* Patching addresses in code
offset: 0000006C: MOV RAX, [RIP+0xa770] [a770] --> [a990]
offset: 000000A1: LEA R9, [RIP+0xa723] [a723] --> [a943]
offset: 000000A8: LEA R8, [RIP+0xa714] [a714] --> [a934]
offset: 000000AP: LEA RDX, [RIP+0xa105] [a105] --> [a3a5]
offset: 000000CC: MOV RDX, [RIP+0xa6f8] [a6f8] --> [a910]
offset: 000000D3: MOV RCX, [RIP+0xa6e9] [a6e9] --> [a909]
offset: 000000F8: MOV RDX, [RIP+0xa6cc] [a6cc] --> [a8ec]
offset: 0000011D: MOV RCX, [RIP+0xa69f] [a69f] --> [a8bf]
offset: 00000193: MOV RCX, [RIP+0xa629] [a629] --> [a849]
offset: 000001A7: MOV RDX, [RIP+0xa61d] [a61d] --> [a83d]
offset: 0000021C: MOV RCX, [RIP+0xa5a0] [a5a0] --> [a7c0]
offset: 0000022A: MOV RDX, [RIP+0xa59a] [a59a] --> [a7ba]
offset: 0000026B: LEA RCX, [RIP+0xa561] [a561] --> [a791]
offset: 00000279: MOV RAX, [RIP+0xa563] [a563] --> [a783]
offset: 00000297: CMP QWORD [RIP+0xa53c], 0x0 [a53c] --> [a75c]
offset: 000002A1: MOV [RIP+0xa533], RDX [a533] --> [a753]
offset: 000002AC: MOV [RIP+0xa530], RAX [a530] --> [a750]
offset: 000002B7: MOV [RIP+0xa535], RCX [a535] --> [a755]
offset: 000002BE: MOV [RIP+0xa526], RAX [a526] --> [a746]
offset: 000002E8: MOV RAX, [RIP+0xa4f1] [a4f1] --> [a711]
offset: 000002F5: LEA RDX, [RIP+0xa4b7] [a4b7] --> [a6d7]
offset: 00000320: MOV RAX, [RIP+0xa4bc] [a4bc] --> [a6dc]
offset: 00000338: LEA RDX, [RIP+0x9f14] [9f14] --> [a134]
offset: 000003B2: MOV RAX, [RIP+0xa42a] [a42a] --> [a64a]
Patched 24 instructions
* Injected new DS0T into AmiBoardInfo
* Replaced AmiBoardInfo in BIOS with patched one
Injecting FPS into BIOS...
* Current file: '1FA1F39E-FEFF-4AAE-8D7B-38A070A3B609_PartitionDxe.ffs'...
* File not existant, inserting at the end of volume
* Current file: '4CF484CD-135F-4FDC-BAFB-1AA184848D36_HfsPlus.ffs'...
* File not existant, inserting at the end of volume
* Current file: '961378FE-0697-44E3-AF35-66C785CD281F_EnhancedFat.ffs'...
* File not existant, inserting at the end of volume
* Current file: '99F2839C-57C3-411E-ABC3-ADE52670960D_OzmosisDefaults.ffs'...
* File not existant, inserting at the end of volume
* Current file: 'AAE65279-0761-41D1-BA13-4A3C1383603F_Ozmosis.ffs'...
* File not existant, inserting at the end of volume
* Current file: 'AC259206-DC99-4897-8353-728B0CA0849_OzmosisBlackTheme.ffs'...
* File not existant, inserting at the end of volume
* Current file: 'C57AD687-0515-40A0-9021-551652854E37_HermitShellx64.ffs'...
* File not existant, inserting at the end of volume
* Current file: 'DADE1001-1831-4FE4-8557-26FCEFC78275_SmcEmulatorKext.ffs'...
* File not existant, inserting at the end of volume
* Current file: 'DADE1002-1831-4FE4-8557-26FCEFC78275_DisablerKext.ffs'...
* File not existant, inserting at the end of volume
* Current file: 'DADE1003-1831-4FE4-8557-26FCEFC78275_InjectorKext.ffs'...
* File not existant, inserting at the end of volume
* Current file: 'DADE1006-1831-4FE4-8557-26FCEFC78275_CpuSensorsKext.ffs'...
* File not existant, inserting at the end of volume
* Current file: 'DADE1007-1831-4FE4-8557-26FCEFC78275_LpcSensorsKext.ffs'...
* File not existant, inserting at the end of volume
* Current file: 'DADE1008-1831-4FE4-8557-26FCEFC78275_GpuSensorsKext.ffs'...
* File not existant, inserting at the end of volume
* Current file: 'VoodooHdaKext.ffs'...
* File not existant, inserting at the end of volume
Deleting non required Filesystem FPS...
* Removed 'Filesystem' [93022F8C-1F89-47EF-BBB2-5814FF6890F5] successfully!
Reconstructing final image...
* Image built successfully!
Warning: File already exists! Overwriting it...
Bios successfully saved to /Users/thomas/Desktop/Bios-0z/Test/mb_bios_ga-z77-ds3h_f11a/Z77DS3H-11a-0ZM-DS0T-G-1479.rom'
Starting verification... if you see any unusual warnings/errors --> DONT USE THE IMAGE!
NOTE: You are using this application on your own risk anyway..
```

Damit ist das Normale Bios Fertig, das Bios ist erstellt wurden und kann nun geflasht werden.

Sollten Fehler auftreten wird es nicht erstellt von ozmtool.

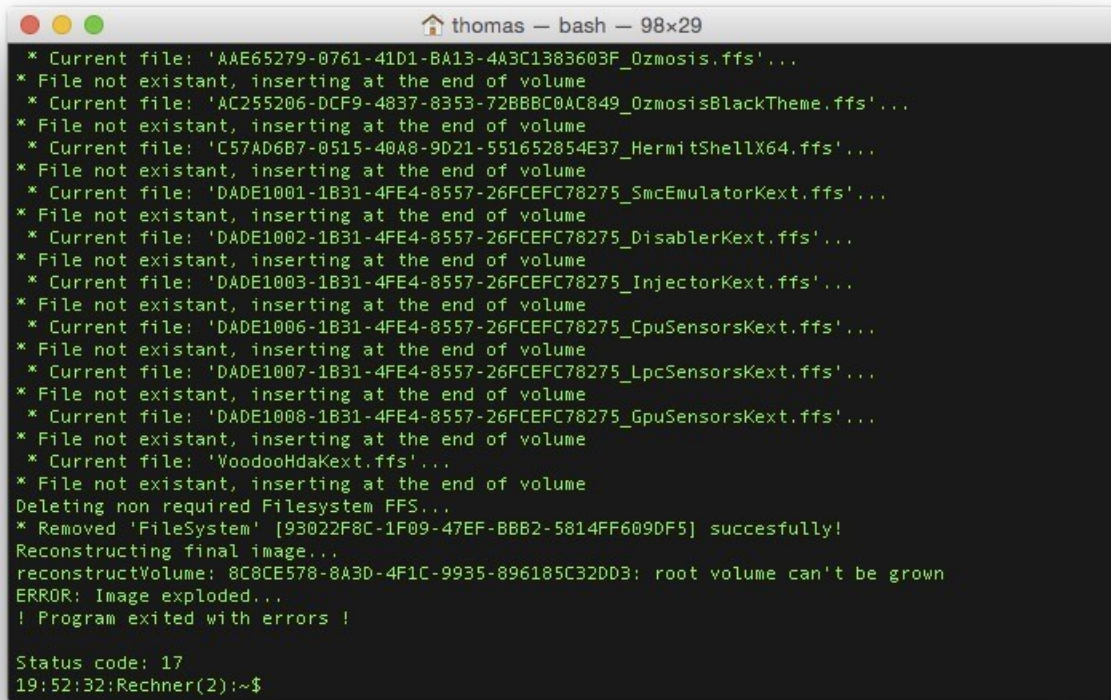
So nun die Sonderfälle da gibt es dann leider 2 unterschiede, diejenigen wo man nur die "überflüssigen" Netzwerk Treiber rausschmeißt (Kein PXE Boot mehr möglich) und ein paar wo dann auch noch das Splash Screen Logo raus muss um Platz zu schaffen.

Die DSDT Extraktion und das spätere wieder einsetzen nach dem Patch ist genau so wie oben.

Fangen wir also mit der einfachen Variante an, wenn folgender Fehler auftritt-

als Beispiel benutze ich mal das BIOS Z87DS3H

Die Zeile von oben lässt nun das image Explodieren (siehe Bild) es wird auch kein Bios File erstellt, aus Sicherheitsgründen, denn wer sich das flashen würde hatte ein Problem!



```
thomas — bash — 98x29
* Current file: 'AAE65279-0761-41D1-BA13-4A3C1383603F_Ozmosis.ffs'...
* File not existant, inserting at the end of volume
* Current file: 'AC255206-DCF9-4837-8353-72BBBC0AC849_OzmosisBlackTheme.ffs'...
* File not existant, inserting at the end of volume
* Current file: 'C57AD6B7-0515-40A8-9D21-551652854E37_HermitShellX64.ffs'...
* File not existant, inserting at the end of volume
* Current file: 'DADE1001-1B31-4FE4-8557-26FCEFC78275_SmcEmulatorKext.ffs'...
* File not existant, inserting at the end of volume
* Current file: 'DADE1002-1B31-4FE4-8557-26FCEFC78275_DisablerKext.ffs'...
* File not existant, inserting at the end of volume
* Current file: 'DADE1003-1B31-4FE4-8557-26FCEFC78275_InjectorKext.ffs'...
* File not existant, inserting at the end of volume
* Current file: 'DADE1006-1B31-4FE4-8557-26FCEFC78275_CpuSensorsKext.ffs'...
* File not existant, inserting at the end of volume
* Current file: 'DADE1007-1B31-4FE4-8557-26FCEFC78275_LpcSensorsKext.ffs'...
* File not existant, inserting at the end of volume
* Current file: 'DADE1008-1B31-4FE4-8557-26FCEFC78275_GpuSensorsKext.ffs'...
* File not existant, inserting at the end of volume
* Current file: 'VoodooHdaKext.ffs'...
* File not existant, inserting at the end of volume
Deleting non required Filesystem FFS...
* Removed 'FileSystem' [93022F8C-1F09-47EF-BBB2-5814FF6090F5] succesfully!
Reconstructing final image...
reconstructVolume: 8C8CE578-8A3D-4F1C-9935-896185C32DD3: root volume can't be grown
ERROR: Image exploded...
! Program exited with errors !

Status code: 17
19:52:32:Rechner(2):~$
```


So ich habe mir für solche Fälle dann ein extra Ozmosis Verzeichnis erstellt wo nur das wirklich nötige drin ist, also

Ozmosis.ffs

OzmosisDefault.ffs

OzmosisTheme.ffs

HfsPlus.ffs

EnhancedFat.ffs

SmcEmulatorKext.ffs

PartitionDxe.ffs (kann zur Not weggelassen werden da eigentlich nur für die SL-DVD Installation relevant.)

wenn wir nun den Schalter -a 2 hinzufügen zur Zeile dann werden die PXE Treiber automatisch mit entfernt.

Code

1. `./ozmtool --ozmcreate -f Ozmosis-Verzeichnis-Minimum -d DSDT.aml -i Orgianl-Bios -o Ausgabe Bios -a 2`

```

thomas -- bash -- 123x40
* Replaced AmiBoardInfo in BIOS with patched one
Injecting FFS into BIOS...
* Current file: '1FA1F39E-FEFF-4AAE-BD7B-38A070A3B609_PartitionDxe.ffs'...
* File not existant, inserting at the end of volume
* Current file: '4CF484CD-135F-4FDC-BAFB-1AA104B48D36_HfsPlus.ffs'...
* File not existant, inserting at the end of volume
* Current file: '961578FE-B6B7-44C3-AF35-6BC705CD2B1F_EnhancedFat.ffs'...
* File not existant, inserting at the end of volume
* Current file: '99F2839C-57C3-411E-ABC3-ADE52670960D_OzmosisDefaults.ffs'...
* File not existant, inserting at the end of volume
* Current file: 'AAE65279-0761-41D1-BA13-4A3C1383603F_Ozmosis.ffs'...
* File not existant, inserting at the end of volume
* Current file: 'AC255206-DCF9-4837-8353-72BBBC0AC849_OzmosisBlackTheme.ffs'...
* File not existant, inserting at the end of volume
* Current file: 'DADE1001-1B31-4FE4-8557-26CFEFC78275_SmcEmulatorKext.ffs'...
* File not existant, inserting at the end of volume
Deleting non-essential Ozmosis files to save space...
* Removed 'OzmosisTheme' [AC255206-DCF9-4837-8353-72BBBC0AC849] succesfully!
Deleting network BIOS stuff (PXE) to save space...
* Removed 'TcpDxe' [B1625D3C-9D2D-4E0D-B864-8A763EE4EC50] succesfully!
* Removed 'Dhcp4Dxe' [8DD9176E-EE87-4F0E-8A84-3F998311F930] succesfully!
* Removed 'Ip4ConfigDxe' [8F9296EF-2880-4659-B857-915A8901BDC8] succesfully!
* Removed 'Ip4Dxe' [8F92960F-2880-4659-B857-915A8901BDC8] succesfully!
* Removed 'Mfttp4Dxe' [61AFA223-8AC8-4440-9AB5-762B1BF05156] succesfully!
* Removed 'Udp4Dxe' [10EE5462-B207-4A4F-ABD8-CB522ECA3A4] succesfully!
* Removed 'Dhcp6Dxe' [8DD9176D-EE87-4F0E-8A84-3F998311F930] succesfully!
* Removed 'Ip6Dxe' [8F92960E-2880-4659-B857-915A8901BDC8] succesfully!
* Removed 'Mfttp6Dxe' [61AFA251-8AC8-4440-9AB5-762B1BF05156] succesfully!
* Removed 'Udp6Dxe' [10EE54AE-B207-4A4F-ABD8-CB522ECA3A4] succesfully!
Deleting non required Filesystem FFS...
* Removed 'FileSystem' [93022F8C-1F09-47EF-BBB2-5814FF609DF5] succesfully!
Reconstructing final image...
* Image built successfully!
Bios successfully saved to '/Users/thomas/Desktop/Bios-Oz/Test/Z87DS3H-F3-OZM-DSDT-G-1479-M.rom'

Starting verification... if you see any unusual warnings/errors -> DONT USE THE IMAGE!
NOTE: You are using this application on your own risk anyway..
NOTE: 'parseInputFile: descriptor parsing failed, descriptor region has intersection with BIOS region' can be ignored..

20:41:04:Rechner(2):~$

```

So wie wir hier nun sehen können ist das Bios zwar sauber erstellt wurden aber leider hat das ozmtool in der aktuellen Version 2 den "Fehler" die Theme.ffs wieder gelöscht da bis zur aktuellen Version nicht als Notwendig war.

Also fügen wir sie nun einfach wieder per Hand hinzu 😊

UEFITool und Bios geladen, so nun kann man per zum Ozmosis hingehen oder es sich einfach machen 🤪 cmd +F auf Text umstellen und nach ozmosis suchen lassen, siehe Bild.

The screenshot shows the UEFITool interface. On the left, a tree view displays the BIOS structure, including sections like 'BIOS region' and 'Compressed section'. A search dialog box is open in the foreground, with the search mode set to 'Text' and the search term 'ozmosis'. The dialog also has checkboxes for 'Unicode' and 'Case sensitive'. The background shows the main BIOS structure tree with various files and regions listed.

nun einfach unten auf den ersten Eintrag doppelklicken und man kommt dahin wo man hin will.



UEFITool 0.18.7 - Z87D53H-F3-OZM-DSDT-G-1479-M.rom

Name	Action	Type	Subtype	Text
5E9CABA3-F281-497A-ADAC-24F575E9CD09		File	DXE driver	TcgDxe
2688B232-9C22-4C12-9E1F-857C8F2AAE3		File	DXE driver	TcgDxePlatform
F03F9E1-3C73-46E8-B788-2BBA3F718F6C		File	DXE driver	TCCSSM
858EBE6F-360F-415B-B7DC-463AAE803412		File	DXE driver	TcgLegacy
A29A63E3-E4E7-495F-8A6A-07738300CB83		File	DXE driver	AmiTcgPlatformDxe
8AA318C6-3379-41E8-B25A-53F82CC0F254		File	Freeform	
142284E2-C781-4AF9-A729-923758096003		File	Freeform	
70113AA0-6280-48C6-BACE-DFE7668E8307		File	Freeform	
50F60960-7C98-4C78-9A1D-CSA183386A88		File	DXE driver	AmiTcgNvflagSample
399CF3A7-82C7-4D9B-9123-DB1184298603		File	DXE driver	DpcDxe
80D91798-EE87-4F8E-8A84-3F998311F930		File	DXE driver	ArpDxe
30D7A87B-0580-44A4-986F-2E130B50274C		File	DXE driver	SnpDxe
C38B94E3-C8F2-4A80-91AB-FAB0F62181C9		File	DXE driver	MnpDxe
0EF8A3B1-388A-4862-88E6-C7877D58AEDF		File	DXE driver	UefIPxeBcDxe
0029DE6A-E024-4E8B-A91D-9F23AA1F4E92		File	DXE driver	NetworkStackSetupScreen
580D9980-3850-11D7-883A-00500647304E8		File	DXE driver	UNCD
84E4AAA1-29A1-11D7-8838-00500647304E8		File	SMM module	USBRT
4C806CD9-198A-4617-8483-609194A1ACFC		File	DXE driver	USBINT13
199FD111-0785-4132-A9B3-1F66573F0060		File	DXE driver	GenericComponentsSmm
BE2168A8-38C4-4535-A6CA-5DC45B43A0DF		File	DXE driver	SmiVariable
132E73B8-3025-4FBF-B193-8ACB58EFB0B9		File	DXE driver	QFlash
56B78419-7183-408E-83F4-F35468021E40		File	DXE driver	EzFirmwareBrowser
A56897A1-A77F-4600-840B-2280A801FA9A		File	DXE driver	SmmRunTime
4DCBF9BA-DECI-428B-8A09-81555694F6CF		File	DXE driver	GbtCustomizeButtonSmm
534A6A34-CF78-4A56-BEDB-CB49A808060C		File	DXE driver	RTCWakeup
08A8A432-93CC-48D2-9F34-3496CA92185		File	DXE driver	SmartFanCtrlDxe
701868A9-1EE3-446C-825C-5A26F449CE52		File	DXE driver	OemLOGO
86EE84E1-3375-41A1-AFBA-8478029663AA		File	Freeform	MyOemLogo1
86EE84E2-3375-41A1-AFBA-8478029663AA		File	Freeform	MyOemLogo2
8FE285C9-5817-4FBF-9375-89614A78E199		File	DXE driver	OEMDxe
78B28B99-6188-11D5-9A50-0090273FC140		File	Freeform	
16271FCA-5509-4A33-93FC-5A3E81280E86		File	DXE driver	CRB0XE
221F1D4F-034C-4BEA-B28B-B7A967280607		File	DXE driver	CRBSMI
C084562C-6864-48A3-A081-C8D35E828920		File	DXE driver	CsplLibDxe
1FA1F39E-FEFF-4FDC-8A78-1A18A4840336		File	DXE driver	PartitionDxe
4CF484C0-135F-4FDC-8A78-1A18A4840336		File	DXE driver	HfsPlus
961578FE-8687-44C3-AF35-68C785CD281F		File	DXE driver	EnhancedFat
99F2839C-57C3-411E-ABC3-ADE5267D9680		File	Freeform	OzmosisDefaults
Compressed section		Section	Compressed	
Raw section		Section	Raw	
User interface section		Section	User interface	
AAE65279-0761-41D1-BA13-4A3C1383683F		File	DXE driver	Ozmosis
DADE1801-1B31-4FE4-8557-26FCEFC78275		File	Freeform	SncEmulatorKext
User interface section		Section	User interface	
Pad		File	Pad	
1788B572-377F-44EF-8F4E-B09FFF46A078		File	Raw	
8ABA458A-BEE9-42C1-9549-2880296A83C3		File	Freeform	
899487D7-99FE-4308-9A21-79EC328CAC21		File	DXE driver	Setup
EF052CC-8E99-48F8-96C8-E08C809078FC		File	PEI module	S3Restore
8C8CE578-8A30-4F1C-9935-896185C32003		Volume	Boot	

Messages

```
Unicode text "ozmosis" found in User interface section at offset 00000000
Unicode text "ozmosis" found in PE32+ image section at offset 0001fd38
Unicode text "ozmosis" found in PE32+ image section at offset 0001f9c8
Unicode text "ozmosis" found in PE32+ image section at offset 00020000
Unicode text "ozmosis" found in User interface section at offset 00000000
```

Hier angekommen setzen wir einfach das OzmosisTheme.fff ans ende via "Insert after", siehe Bild.

UEFITool 0.18.7 - Z87D53H-F3-OZM-DSDT-G-1479-M.rom

Name	Action	Type	Subtype	Text
196CA3D8-9A5A-4735-8328-8FFC1D93D0188		File	DXE driver	TcgPlatformSetupPolicy
5E9CABA3-F281-497A-ADAC-24F575E9CD09		File	DXE driver	TcgDxe
2688B232-9C22-4C12-9E1F-857C8F2AAE3		File	DXE driver	TcgDxePlatform
F03F9E1-3C73-46E8-B788-2BBA3F718F6C		File	DXE driver	TCCSSM
858EBE6F-360F-415B-B7DC-463AAE803412		File	DXE driver	TcgLegacy
A29A63E3-E4E7-495F-8A6A-07738300CB83		File	DXE driver	AmiTcgPlatformDxe
8AA318C6-3379-41E8-B25A-53F82CC0F254		File	Freeform	
142284E2-C781-4AF9-A729-923758096003		File	Freeform	
70113AA0-6280-48C6-BACE-DFE7668E8307		File	Freeform	
50F60960-7C98-4C78-9A1D-CSA183386A88		File	DXE driver	AmiTcgNvflagSample
399CF3A7-82C7-4D9B-9123-DB1184298603		File	DXE driver	DpcDxe
80D91798-EE87-4F8E-8A84-3F998311F930		File	DXE driver	ArpDxe
30D7A87B-0580-44A4-986F-2E130B50274C		File	DXE driver	SnpDxe
C38B94E3-C8F2-4A80-91AB-FAB0F62181C9		File	DXE driver	MnpDxe
0EF8A3B1-388A-4862-88E6-C7877D58AEDF		File	DXE driver	UefIPxeBcDxe
0029DE6A-E024-4E8B-A91D-9F23AA1F4E92		File	DXE driver	NetworkStackSetupScreen
580D9980-3850-11D7-883A-00500647304E8		File	DXE driver	UNCD
84E4AAA1-29A1-11D7-8838-00500647304E8		File	SMM module	USBRT
4C806CD9-198A-4617-8483-609194A1ACFC		File	DXE driver	USBINT13
199FD111-0785-4132-A9B3-1F66573F0060		File	DXE driver	GenericComponentsSmm
BE2168A8-38C4-4535-A6CA-5DC45B43A0DF		File	DXE driver	SmiVariable
132E73B8-3025-4FBF-B193-8ACB58EFB0B9		File	DXE driver	QFlash
56B78419-7183-408E-83F4-F35468021E40		File	DXE driver	EzFirmwareBrowser
A56897A1-A77F-4600-840B-2280A801FA9A		File	DXE driver	SmmRunTime
4DCBF9BA-DECI-428B-8A09-81555694F6CF		File	DXE driver	GbtCustomizeButtonSmm
534A6A34-CF78-4A56-BEDB-CB49A808060C		File	DXE driver	RTCWakeup
08A8A432-93CC-48D2-9F34-3496CA92185		File	DXE driver	SmartFanCtrlDxe
701868A9-1EE3-446C-825C-5A26F449CE52		File	DXE driver	OemLOGO
86EE84E1-3375-41A1-AFBA-8478029663AA		File	Freeform	MyOemLogo1
86EE84E2-3375-41A1-AFBA-8478029663AA		File	Freeform	MyOemLogo2
8FE285C9-5817-4FBF-9375-89614A78E199		File	DXE driver	OEMDxe
78B28B99-6188-11D5-9A50-0090273FC140		File	Freeform	
16271FCA-5509-4A33-93FC-5A3E81280E86		File	DXE driver	CRB0XE
221F1D4F-034C-4BEA-B28B-B7A967280607		File	DXE driver	CRBSMI
C084562C-6864-48A3-A081-C8D35E828920		File	DXE driver	CsplLibDxe
1FA1F39E-FEFF-4FDC-8A78-1A18A4840336		File	DXE driver	PartitionDxe
4CF484C0-135F-4FDC-8A78-1A18A4840336		File	DXE driver	HfsPlus
961578FE-8687-44C3-AF35-68C785CD281F		File	DXE driver	EnhancedFat
99F2839C-57C3-411E-ABC3-ADE5267D9680		File	Freeform	OzmosisDefaults
Compressed section		Section	Compressed	
Raw section		Section	Raw	
User interface section		Section	User interface	
AAE65279-0761-41D1-BA13-4A3C1383683F		File	DXE driver	Ozmosis

Messages

```
Unicode text "ozmosis" found in User interface section at offset 00000000
Unicode text "ozmosis" found in PE32+ image section at offset 0001fd38
Unicode text "ozmosis" found in PE32+ image section at offset 0001f9c8
Unicode text "ozmosis" found in PE32+ image section at offset 00020000
Unicode text "ozmosis" found in User interface section at offset 00000000
```

<https://www.hackintosh-forum.de/forum/thread/18450-deutsche-anleitung-ozmosis-bios-erstellen-bearbeiten-etc/?postID=139472#post139472>

UEFITool 0.18.7 - Z87DS3H-F3-OZM-DSDT-G-1479-M.rom

Name	Action	Type	Subtype	Text	Information
BC3270B0-8982-4F55-9F79-856AD7E987C5		File	DXE driver	SMIFlash	Name: AC255286-DCF9-4837-8353-72888C8AC849 Type: 02 Attributes: 00 Size: 02a559 State: 00
196CA30B-9A5A-4735-8328-8FFC1D930188		File	DXE driver	TcpPlatformSetupPolicy	
5E9CABA3-F281-497A-ADAC-24F575E9CDE9		File	DXE driver	TcgDxe	
2688B232-9C02-4C12-BE1F-857C8F72AAE3		File	DXE driver	TcgPlatform	
F093F8E1-3C73-46E8-8786-288A3718786C		File	DXE driver	TcgSmm	
858EBE6F-366F-415B-87DC-463AAE883412		File	DXE driver	TcgLegacy	
A29A63E3-E4E7-495F-8A6A-07738300C8B3		File	DXE driver	AmiTcpPlatformDxe	
8AA318C6-3379-41E8-825A-53F82CC8F254		File	Freeform		
142284E2-C781-4AF9-A729-923758096083		File	Freeform		
70113A4D-6288-48C5-8ACE-0F676688E387		File	Freeform		
58F6896D-7C98-4C78-9A1D-C5A1833B6A88		File	DXE driver	AmiTcgNvFlagSample	
399CF3A7-82C7-409B-9123-0B1184298603		File	DXE driver	Dp6Dxe	
80091798-EE87-4F0E-8A84-3F998311F930		File	DXE driver	ArpDxe	
3007A878-058D-444F-886F-2E13085D274C		File	DXE driver	SnipDxe	
C8804E3-48F2-4A8B-91AB-7480F62181C9		File	DXE driver	MmpDxe	
8EF8A3B1-38BA-4862-886E-C7877D58AEDF		File	DXE driver	UefiPx6BcDxe	
8029D6EA-E024-4E8B-A91D-9F23AA1F4E92		File	DXE driver	NetworkStackSetupScreen	
5880D988-385D-11D7-883A-8058047304E8		File	DXE driver	UNCD	
84EAA41-29A1-11D7-883B-8058047304E8		File	DXE driver	USBRT	
4C886CD9-19BA-4E17-8483-809194A1ACFC		File	DXE driver	USBINT13	
199FD111-8785-4132-A9B3-1F66573F0860		File	DXE driver	GenericComponentsSmm	
BE2168AB-38C4-4535-AECA-5DC45A84A0DF		File	DXE driver	SmiVariable	
132EC738-3825-4F8F-B193-8AC858E8F8089		File	DXE driver	QFlash	
58B78A19-7183-408E-83F4-735468021E48		File	DXE driver	EzFileBrowser	
A56897A1-477F-4608-84DB-22B8A801FA9A		File	DXE driver	SmmRuntime	
4DC8F9BA-DEC1-428B-8A89-81555694F6FC		File	DXE driver	GetCustomizeButtonSmm	
5344A434-CF78-4A56-BED8-CB49A8D8868C		File	DXE driver	RTcWakeup	
D8A8A432-93CC-48D2-9F34-3496CA921885		File	DXE driver	SmartFanCtrlDxe	
70188849-1EE3-446E-825C-9A28F449C322		File	DXE driver	OemLogo	
86EE84E1-3375-41A1-AFBA-8478D29663AA		File	Freeform	MyOemLogo1	
86EE84E2-3375-41A1-AFBA-8478D29663AA		File	Freeform	MyOemLogo2	
BFE285C9-5817-4F8F-9375-89614A78E199		File	DXE driver	OMBXE	
78828899-618B-11D5-9A5D-8098273FC14D		File	Freeform		
16271FCA-5509-4A33-93FC-SA3E8126D896		File	DXE driver	CRBBDXE	
221F1D4F-834C-48EA-828B-87A967288607		File	DXE driver	CRBSMI	
CD84562C-6864-48A3-AB81-C8D35E828928		File	DXE driver	CspLibDxe	
1FA1F39E-FEFF-4AAE-8D7B-38A878A38689		File	DXE driver	PartitionDxe	
4CF484C0-135F-4FDC-8A7B-1AA18A848036		File	DXE driver	WfsPlus	
961578FE-8687-44C3-AF35-68C785CD281F		File	DXE driver	EnhancedFat	
99F2839C-57C3-411E-ABC3-ADE526709680		File	Freeform	OzmosisDefaults	
Compressed section		Section	Compressed		
Raw section		Section	Raw		
User interface section		Section	User interface		
AAE65279-8761-41D1-8A13-4A3C1383683F		File	DXE driver	Ozmosis	
D4DE1881-1831-4FE4-8557-26FCFC78275		File	Freeform	SmmEmulatorKext	
AC255286-DCF9-4837-8353-72888C8AC849		File	Freeform	OzmosisBltackTheme	
User interface section		Section	User interface		
Padding		File	Pad		
17888572-377F-44EF-8FAE-809FF46A8078		File	Raw		
8A8A458A-BEE9-42C1-9549-2888296A83C3		File	Freeform		
899487D7-99FE-43D8-9A21-79EC328CAC21		File	DXE driver	Setup	
EFDE52CC-EE99-48F8-96C8-E88C889878FC		File	PEI module	S3Restore	

Messages

```

Unicode text "ozmosis" found in User interface section at offset 00000000
Unicode text "ozmosis" found in PE32+ Image section at offset 0001f38
Unicode text "ozmosis" found in PE32+ Image section at offset 0001fcb8
Unicode text "ozmosis" found in PE32+ Image section at offset 000208e0
Unicode text "ozmosis" found in User interface section at offset 00000000
Unicode text "ozmosis" found in User interface section at offset 00000000
  
```

Opened: Z87DS3H-F3-OZM-DSDT-G-1479-M.rom

Speichern und ruhig noch mal laden lassen, sollten Fehler angezeigt werden das Image verwerfen da defekt! ansonsten ist es fertig.

So nun gibt es die Sonderfälle wo das oben genannte nicht geht, es wird trotz -a 2 ein Fehler ausgegeben, nun ist leider etwas mehr Handarbeit nötig damit es unter Umständen doch noch geht, eine Garantie ist es leider auch nicht.

Um mehr Platz zu schaffen hilft es das Splash-Logo (Screen) zu entfernen. Gigabyte benutzt hier das bmp Format für die Logos was dann doch das ein oder andere Kilobyte bringt.

So das geht leider nur mit ChangeLogo unter Windows oder Via Wine in der Kommandozeile da die Normale Ansicht von ChangeLogo kein löschen vorsieht. (netter weise ist der Kommandozeilen Schalter auch noch nicht Dokumentiert) 😡 Ich habe in mehr oder minder

Durch Zufall gefunden durch das lesen nicht Öffentlicher Dokumentationen)

So nun aber genug....kommen wir zum Praxis Teil.

Die DSDT können wir wie gewohnt extrahieren und auch wieder Injecten mit dem ozmtool via --dsdtinject bzw. --dsdtextextract vorgehen analog oben.

Weiter in Teil 2 🤔