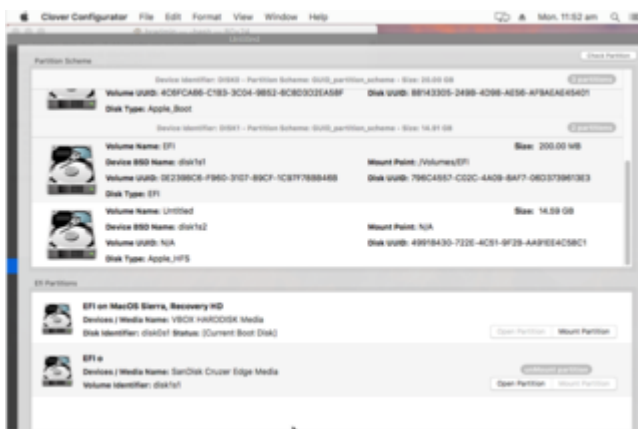
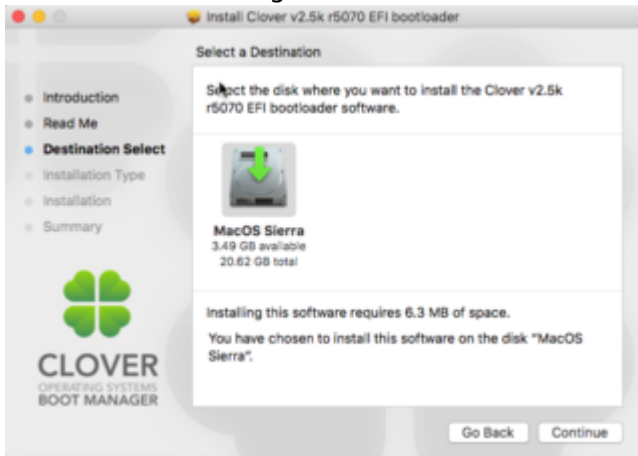


Erledigt Clover bootloader

Beitrag von „xzAtlas“ vom 7. Oktober 2019, 03:05

so I've done as you have said i checked using 'diskutil list' and even through that its coming up its still appearing in clover configurator and it can still be mounted to access the EFI partition but it still won't appear in the bootloader installer i have provided pictures to show that's its in the clover config and disk util but not in the clover bootloader installer



```
/dev/disk1 (external, physical):  
#:                TYPE NAME                SIZE  IDENTIFIER  
0:                GUID_partition_scheme      *16.0 GB  disk1  
1:                 EFI EFI                  209.7 MB  disk1s1  
2:                 Apple_HFS                  15.7 GB  disk1s2
```