

In Arbeit Intel HD Graphics 2500 (QE/Unterstützt, Funktionsset macOS GPUFamily1 v3 & v4)

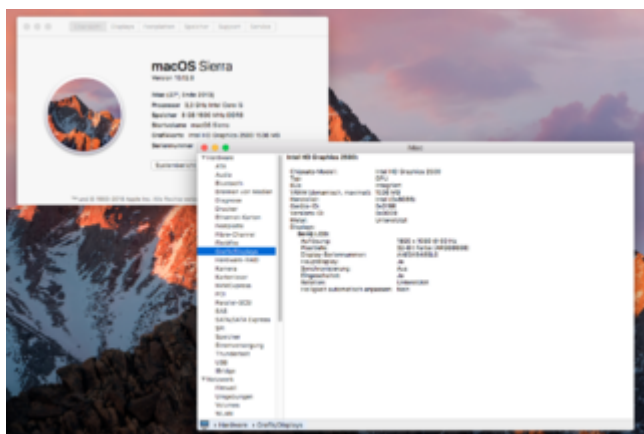
Beitrag von „macHacks“ vom 9. Juli 2020, 20:32

[Zitat von derHackfan](#)

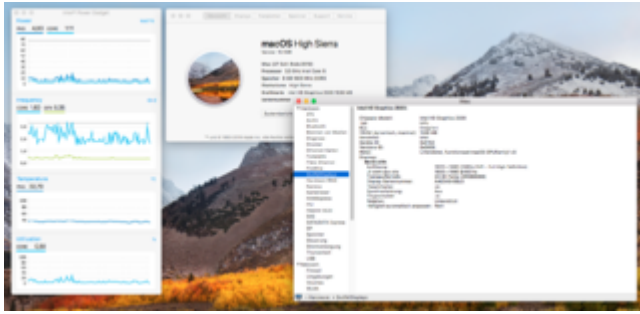
Update: OS X El Capitan 10.11.6 can also use the HD 2500.



Update: macOS Sierra 10.12.6 can also use the HD 2500.



Update: macOS High Sierra 10.13.6 can also use the HD 2500.



Update: macOS Mojave 10.14.3 can also use the HD 2500.

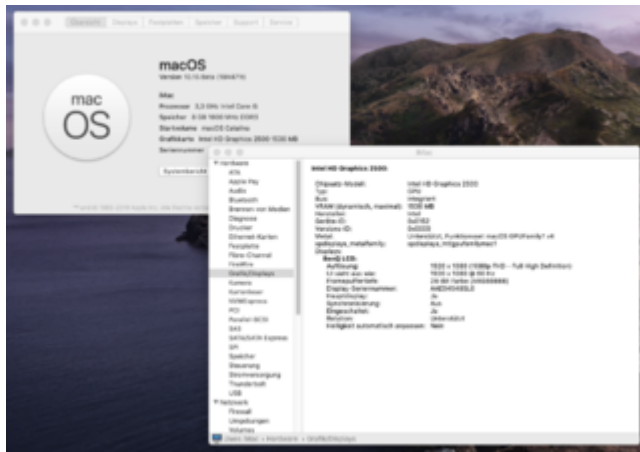


Bootloader: Ozmosis/Clover macOS Mojave ready, Inject Intel, ig-platform-id

Update: macOS Mojave 10.14.4 Beta can also use the HD 2500.



Update: macOS Catalina 10.15 Beta (19A471t) can also use the HD 2500.



Boat loader: unchanged

Alles anzeigen

hi i follow your instructions but i didn't work for me 🤔🍏 I try with Catalina, Mojave and Sierra without any success 🌈. vram always 3mb. Any solutions. Thanks. ❤️