

Ältere macOS BigSur Versionen laden?

Beitrag von „LetsGo“ vom 6. Oktober 2021, 13:50

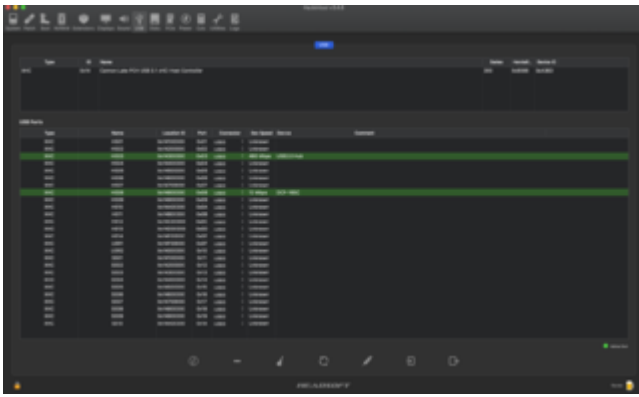
[atl](#)

Mit USBToolBox (vermutet wird mit USBMap nicht anders sein) werden eigentlich die Ports nur schön von 0x14100000 bis 0x14F00000 also 1-15 neu nummeriert. In der vierten Spalte "Port" sieht man, auf welchen Port der SSDT sich das Mapping bezieht. Und z.B. port-count 18000000 in der info.plist bezieht sich auf den letzten Port (0x18) in besagter Spalte.

Type	Name	Location ID	Port	Connector	Over Speed	Device
XHC	HS01	0x14100000	0x01	USB3	+	Unknown
XHC	HS02	0x14200000	0x02	USB2	+	12 Mbps Gaming Mouse 5502
XHC	HS03	0x14300000	0x03	USB2	+	1.5 Mbps USB Keyboard
XHC	HS04	0x14400000	0x04	USB2	+	Unknown
XHC	HS05	0x14500000	0x05	USB2	+	Unknown
XHC	HS06	0x14600000	0x06	USB2	+	Unknown
XHC	HS07	0x14700000	0x07	USB2	+	12 Mbps DCP-185C
XHC	HS08	0x14800000	0x08	USB2	+	1.5 Mbps Wireless Air mouse Keyboard
XHC	HS09	0x14900000	0x09	USB3	+	Unknown
XHC	HS01	0x14A00000	0x10	USB2	+	Unknown
XHC	SS02	0x14B00000	0x11	USB2/1e	+	Unknown
XHC	SS03	0x14C00000	0x12	USB2	+	Unknown
XHC	SS04	0x14D00000	0x13	USB2	+	Unknown
XHC	SS05	0x14E00000	0x14	USB2	+	Unknown
XHC	SS06	0x14F00000	0x15	USB2	+	Unknown
XHC	SS07	0x14100000	0x16	USB2	+	Unknown
XHC	SS08	0x14200000	0x17	USB2	+	Unknown
XHC	SS09	0x14300000	0x18	USB2	+	Unknown

Hackintool (USBPorts.kext) übernimmt halt die Portbezeichnungen, wie sie in der SSDT angelegt sind.

```
DefinitionBlock ("", "SSDT", 2, "INTEL", "DELL_SPT", 0x00000000)
{
    External (_SB._GGIV, MethodObj) // 1 Arguments
    External (_SB._PCI0.XHC._RHUB, DeviceObj)
    External (_SB._PCI0.XHC._RHUB.HS01, DeviceObj)
    External (_SB._PCI0.XHC._RHUB.HS02, DeviceObj)
    External (_SB._PCI0.XHC._RHUB.HS03, DeviceObj)
    External (_SB._PCI0.XHC._RHUB.HS04, DeviceObj)
    External (_SB._PCI0.XHC._RHUB.HS05, DeviceObj)
    External (_SB._PCI0.XHC._RHUB.HS06, DeviceObj)
    External (_SB._PCI0.XHC._RHUB.HS07, DeviceObj)
    External (_SB._PCI0.XHC._RHUB.HS08, DeviceObj)
    External (_SB._PCI0.XHC._RHUB.HS09, DeviceObj)
    External (_SB._PCI0.XHC._RHUB.HS10, DeviceObj)
    External (_SB._PCI0.XHC._RHUB.HS11, DeviceObj)
    External (_SB._PCI0.XHC._RHUB.HS12, DeviceObj)
    External (_SB._PCI0.XHC._RHUB.HS13, DeviceObj)
    External (_SB._PCI0.XHC._RHUB.HS14, DeviceObj)
    External (_SB._PCI0.XHC._RHUB.SS01, DeviceObj)
    External (_SB._PCI0.XHC._RHUB.SS02, DeviceObj)
    External (_SB._PCI0.XHC._RHUB.SS03, DeviceObj)
    External (_SB._PCI0.XHC._RHUB.SS04, DeviceObj)
    External (_SB._PCI0.XHC._RHUB.SS05, DeviceObj)
    External (_SB._PCI0.XHC._RHUB.SS06, DeviceObj)
    External (_SB._PCI0.XHC._RHUB.SS07, DeviceObj)
    External (_SB._PCI0.XHC._RHUB.SS08, DeviceObj)
    External (_SB._PCI0.XHC._RHUB.SS09, DeviceObj)
    External (_SB._PCI0.XHC._RHUB.SS10, DeviceObj)
    External (_SB._PCI0.XHC._RHUB.USR1, DeviceObj)
    External (_SB._PCI0.XHC._RHUB.USR2, DeviceObj)
    External (SPTH, UnknownObj)
}
```



Path	Type	Value
IOPlatformIdentifier	string	with apple driver AppleUSBMergeHub
IOClass	string	AppleUSBMergeHub
IONameMatch	string	XHC
IOCPPrimaryMatch	string	DefaultRoot
IOProbeScore	integer	5000
IOProviderClass	string	AppleHSIOUSBXHC
IOProviderMergeProperties	dict	
kUSBMaxPortCurrentLimit	integer	2100
kUSBMaxPowerSupply	integer	5100
kUSBMaxPortCurrentLimit	integer	2100
kUSBMaxPowerSupply	integer	5100
port-count	data	18000000
ports	dict	
H001	dict	
H002	dict	
H003	dict	
H004	dict	
H005	dict	
H006	dict	
H007	dict	
H008	dict	
H009	dict	
H010	dict	
H011	dict	
H012	dict	
S001	dict	
S002	dict	
S003	dict	
S004	dict	
S005	dict	
S006	dict	
S007	dict	
S008	dict	
model	string	MacPro1,1