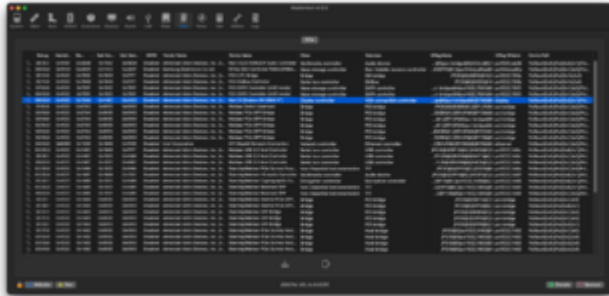


Sehr schlechte OpenCL Performance

Beitrag von „DevFelixJava“ vom 9. August 2024, 13:41



Used Hackintool now instead.

[Zitat von fabiosun](#)

also you can use this in your Device Properties section in your config plist

A screenshot of the Hackintool application's 'Device Properties' section. It shows a list of keys and their corresponding values for a GPU device.

Key	Data Type	Value
ATI/DeviceName	String	AMD R7
ATI/DeviceName	String	Redeon RX
applied	String	gfx804
device-ID	Data	07130000
model	String	AMD Radeon R4800D7

obviously using also Whatevergreen kext and a correct ACPI path for your GPU

Do I need to enter the DeviceID from the marked entry in Hackintool and enter enough zeros to fit the same format?