

Erledigt

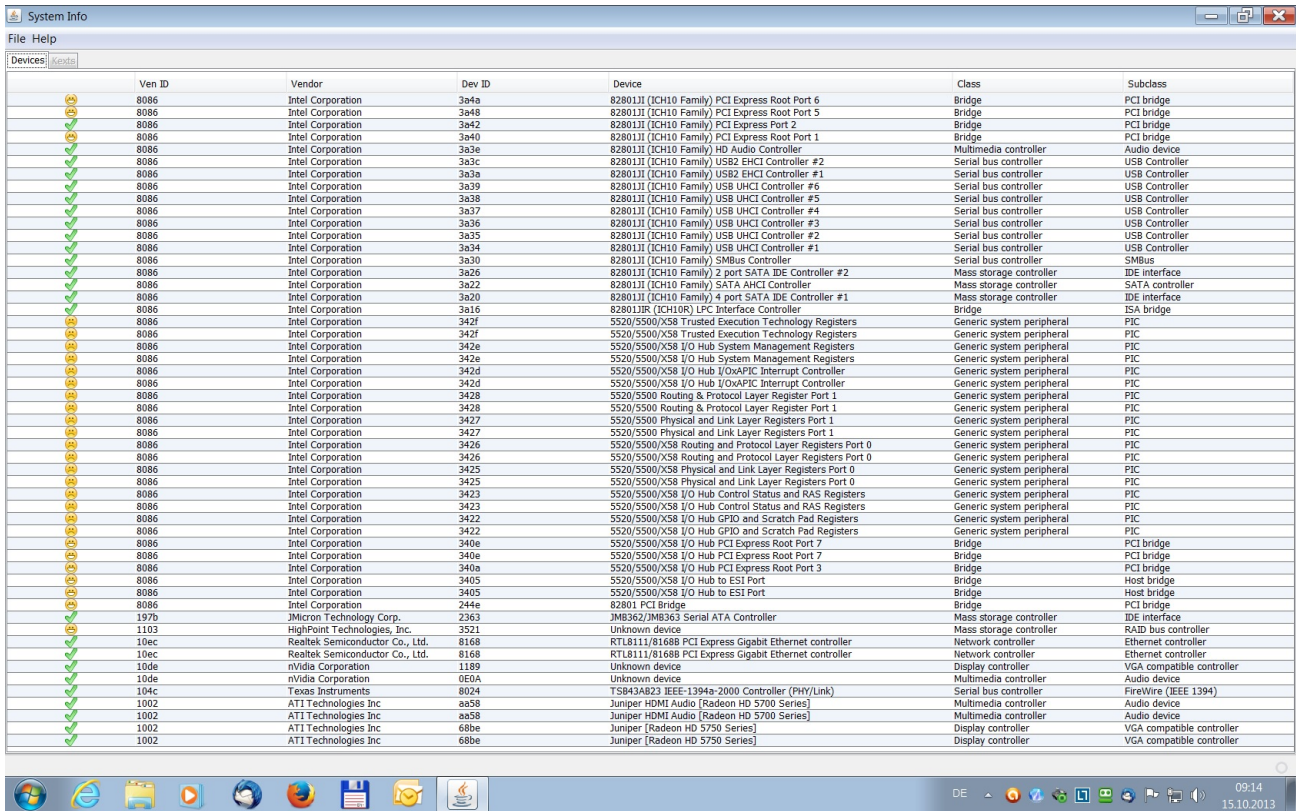
Installationsprobleme Gigabyte GA-EX58-UD5

Beitrag von „thommel“ vom 15. Oktober 2013, 10:09

Hallo Hakinthosexperten,

habe mit Unibeast 2.2.1 und der Mounten Lion App gekauft im App Store einen Stick nach Eurer Anleitung erstellt. Das Booten vom Stick geht bis zu einer Fehlermeldung "missing bluetooth cotroller transport".

```
FireWire (OHCI) TI ID 8024 PCI now active, GUID 001a06400000241d; max speed s400.
USMISC Identifier (non-unique): 0x00000000 0x6564 0x1000 0x100_2
Got boot device = IOService:/AppleACPPlatformExpert/PCI000/AppleACPI/USB@1D,7/AppleUSBHC1/Mass Storage Device@d100000/IOU
SBInterface@0/IOUSBMassStorageClass/IOCSIPeripheralDeviceNub/IOCSIPeripheralDeviceType00/IOBlockStorag
BSD root: disks1, major 1, minor 3
Kernel is LP64
com.apple.launchd 1 com.apple.launchd 1 *** launchd
[] has started up. ***
com.apple.launchd 1 com.apple.launchd 1 *** Verbose
boot, will log to /dev/console. ***
com.apple.launchd 1 com.apple.launchd 1 *** Shutdow
n logging is enabled. ***
Creating RAM Disk for /Volumes
Initialized /dev/rdisk2 as a 512 KB HFS Plus volume
Creating RAM Disk for /var/tmp
Initialized /dev/rdisk3 as a 512 KB HFS Plus volume
Creating RAM Disk for /var/run
Initialized /dev/rdisk4 as a 512 KB HFS Plus volume
Creating RAM Disk for /System/Installation
Initialized /dev/rdisk5 as a 512 KB HFS Plus volume
Creating RAM Disk for /var/db
Initialized /dev/rdisk6 as a 512 KB HFS Plus volume
Creating RAM Disk for /var/folders
Initialized /dev/rdisk7 as a 6 MB HFS Plus volume
Creating RAM Disk for /var/root/Library
Initialized /dev/rdisk8 as a 2 MB HFS Plus volume
Creating RAM Disk for /Library/ColorSync/Profiles/Displays
Initialized /dev/rdisk9 as a 1024 KB HFS Plus volume
Creating RAM Disk for /Library/Preferences
Initialized /dev/rdisk10 as a 512 KB HFS Plus volume
Creating RAM Disk for /Library/Preferences/SystemConfiguration
Initialized /dev/rdisk11 as a 512 KB HFS Plus volume
Creating RAM Disk for /Library/Keychains
Initialized /dev/rdisk12 as a 1024 KB HFS Plus volume
using 64-bit bootcache playlist
BootCacheControl: Unable to open /var/db/BootCache.playlist: 2 No such file or directory
NTFS driver 3.10 (Flags: R/W).
NTFS volume name Volume, version 3.1.
Previous Shutdown Cause: 5
SMC::smcInitHelper ERROR: MMIO regMap == NULL - fall back to old SMC mode
ACPI_SMC_PlatformPlugin::start - waitForService(resourceMatching(AppleIntelCPUPowerManagement) timed out
DSMOS has arrived
[IOBluetoothHC1Controller][start] -- completed
com_lnx2aac_RealtekRTL81xx: Ethernet address 00:24:1d:16:8c:7c
com_lnx2aac_RealtekRTL81xx: Ethernet address 00:24:1d:16:8c:bd
**** [IOBluetoothHC1Controller][SearchForTransportEventTimeoutHandler] -- Missing Bluetooth Controller Transport!
```



```

Motherboard:
CPU Typ      QuadCore Intel Core i7 920, 2800 MHz (21 x 133)
Motherboard Name  Gigabyte GA-EX58-UD5 (2 PCI, 1 PCI-E x1, 1 PCI-E x4, 3 PCI-E x16, 6 DDR3 DIMM, Audio, Dual Gigabit LAN, IEEE-1394)
Motherboard Chipsatz  Intel Tylersburg X58, Intel Nehalem
Arbeitsspeicher  12288 MB (DDR3-1333 DDR3 SDRAM)
DIMM1: Kingston 9905403-152.A00LF      2 GB DDR3-1333 DDR3 SDRAM (8-8-8-22 @ 609 MHz) (7-7-7-20 @ 533 MHz) (6-6-6-17 @ 457 MHz)
DIMM2: Mushkin 998679      2 GB DDR3-1333 DDR3 SDRAM (9-9-9-24 @ 666 MHz) (8-8-8-22 @ 592 MHz) (6-6-6-16 @ 444 MHz)
DIMM3: Kingston 9905403-152.A00LF      2 GB DDR3-1333 DDR3 SDRAM (9-9-9-24 @ 666 MHz) (8-8-8-22 @ 592 MHz) (7-7-7-20 @ 533 MHz) (6-6-6-17 @ 457 MHz)
DIMM4: Mushkin 998679      2 GB DDR3-1333 DDR3 SDRAM (9-9-9-24 @ 666 MHz) (8-8-8-22 @ 592 MHz) (6-6-6-16 @ 444 MHz)
DIMM5: Kingston 9905403-152.A00LF      2 GB DDR3-1333 DDR3 SDRAM (8-8-8-22 @ 609 MHz) (7-7-7-20 @ 533 MHz) (6-6-6-17 @ 457 MHz)
DIMM6: Mushkin 998679      2 GB DDR3-1333 DDR3 SDRAM (9-9-9-24 @ 666 MHz) (8-8-8-22 @ 592 MHz) (6-6-6-16 @ 444 MHz)
BIOS Typ      Award Modular (01/10/12)

Anzeige:
Grafikkarte   ATI Radeon HD 5700 Series (1024 MB)
Grafikkarte   ATI Radeon HD 5700 Series (1024 MB)
Grafikkarte   ATI Radeon HD 5700 Series (1024 MB)
3D-Beschleuniger  ATI EG Juniper LE
Monitor       PnP-Monitor (Standard) [NoDB] (29055069)

Multimedia:
Soundkarte    High Definition Audio-Controller [1002-AA58] [NoDB]
Soundkarte    Realtek ALC889A @ Intel 82801JB ICH10 - High Definition Audio Controller

Datenträger:
IDE Controller  Standard AHCI 1.0 Serieller-ATA-Controller
IDE Controller  Standard-Zweikanal-PCI-IDE-Controller
Massenspeicher Controller  AC96JUWV IDE Controller
Festplatte     INTEL SSDSA2M160G2GC ATA Device (149 GB, IDE)
Optisches Laufwerk  ATAPI iHAS524 D ATA Device
Optisches Laufwerk  WLQVI OLQRGTI7SH6 SCSI CdRom Device
S.M.A.R.T. Festplatten-Status  OK

Partitionen:
C: (NTFS)      149.0 GB (90.5 GB frei)
Speicherkapazität  149.0 GB (90.5 GB frei)

Eingabegeräte:
Tastatur      Standardtastatur (PS/2)
Maus          PS/2-kompatible Maus

Netzwerk:
Primäre IP-Adresse  192.168.178.47
Primäre MAC-Adresse  00-24-1D-16-8C-BD
Netzwerkkarte  Realtek PCIe GBE Family Controller (192.168.178.47)
Netzwerkkarte  Realtek PCIe GBE Family Controller
  
```

vielleicht habt Ihr ein paar Tipps für mich.

Mit freundlichem Gruß

Thomas