

Lenovo IdeaPad 3 und IdeaPad S145-15IIL Opencore und Clover / Intel Core i5-1035G1 Processor

Beitrag von „anonymous_writer“ vom 21. März 2023, 09:05

Intel Core i5-1035G1 Processor
Intel UHD Graphics for 10th Gen

<https://pcsupport.lenovo.com/u...eries-netbooks/s145-14iil>

WIFI Karte:

[OOB BCM94360NG NGFF Broadcom Karte](#)

Für installation vom USB-Stick bitte vorher in der config.plist

“SecureBootModel” auf“Disabled” stellen.

Funktioniert:

- Intel Integrated Graphics
- USB
- WebCam Sonix [via Kext](#)
- Brightness controls
- Battery percentage
- Sleep
- TouchPad ELAN0633 [via GPIO Patch](#) w/ Advanced Gestures
- WiFi BCM94360NG
- Speakers
- P2 Audio Jack w/ Microphone
- Integrated Microphone
- Apple Services (iCloud, Apple Music, Apple TV, unlock with AppleWatch, others..)
- Bluetooth BCM94360NG
- SD Card Reader
- [Sleep Hibernation 3 mit Standby \(Hibernation 25\) 100% MacBook like \(nur Opencore\)](#)

Funktioniert nicht:

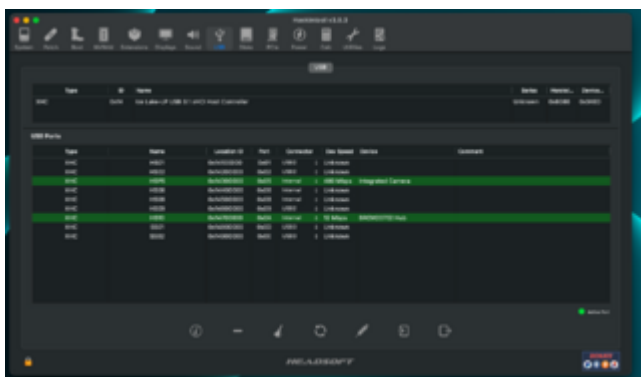
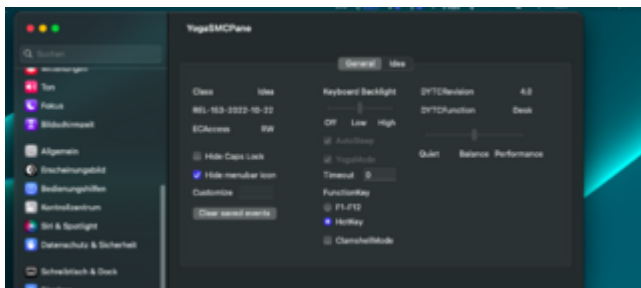
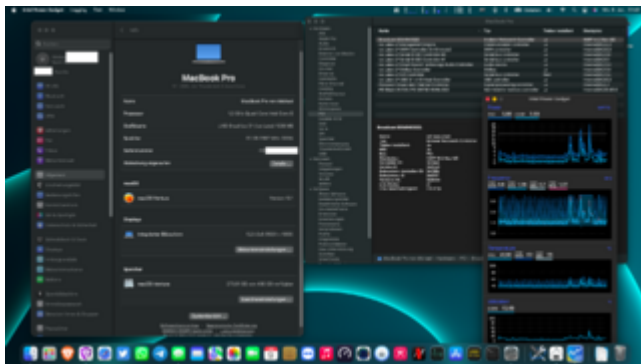
- HDMI Port

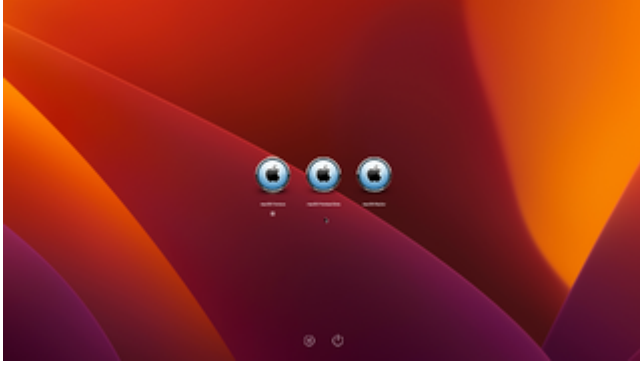
Links zu den EFI-Ordner:

<https://bitbucket.org/anonymou...5iil-opencore/src/master/>

<https://bitbucket.org/anonymou...-15iil-clover/src/master/>

Bilder - Video Hibernatemode 25:





<https://www.youtube.com/watch?v=zcpLceNhjyA>